

BUREAU
ISSUES
ASSOCIATION
—
PLATE
VARIETIES
COMMITTEE

U. S. PLATE VARIETIES

Shift Hunter Letter No. 57

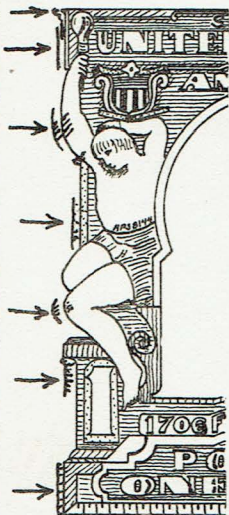
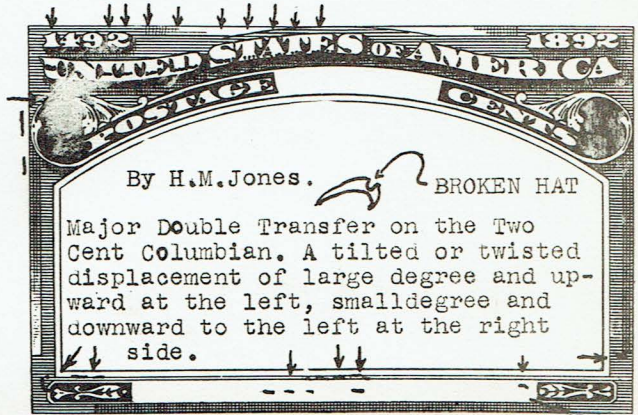
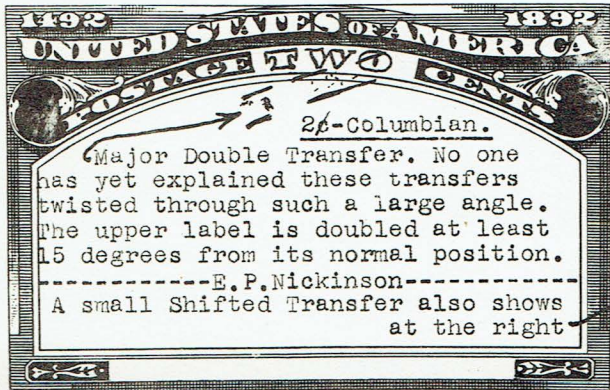
C. W. Bedford
319 Vaniman Street - Akron, Ohio

Commemoratives
and New Issues
MAX G. JOHL
20 W. 37th Street
New York, N. Y.

Offset Issues
DON F. LYBARGER
422 Engineer's Bldg.
Cleveland, Ohio

All Other Issues
C. W. BEDFORD

Subscriptions \$2.00 a year, beginning and ending in September.



On the 1¢-1902, perforated and with a straight edge and center line at the left, Mr. E.P. Nickinson finds a large Double Transfer showing at the left side, as illustrated, also showing strongly in the lower label.

A BROKEN RELIEF FOR THE 2¢-1900

Previous Shift Hunter Letters have mentioned the "Broken Shoulder" on the 2¢-1900. Victor W. Ligda has studied many copied of these breaks, for there are many and finds that ALL THE BREAKS CAME FROM ONE AND THE SAME RELIEF so that it is possible to find a series of copies showing the SEQUENCE OF BREAKS from this brittle relief. The break in the outer frame at "A" came first, being on all subsequent copies and later enlarging by break "H" to make it continuous with "B". (See illustrations below) Later the first break in the "shoulder" appeared at "D" and others followed at "E, F, & G". After the shoulder was well broken, a break in the left frame appeared at "I" and then another at "J", all of these copies still show breaks "A" to "H", thus proving that we are still concerned with the same relief. Finally a break appeared under the "r" of "UNITED" as at "K".

This work of Mr. Ligda's comprises a piece of real philatelic research. It is a pleasure to publish his work and as these stamps are to be had in quantity there will be many others who will "reconstruct the sequence of breaks" and perhaps find them in pairs, strips or blocks so that replating may be possible. Mr Ligda's address is Box 56, Vacaville, Calif. and he will be glad to hear from you.

