

Address all  
Communications  
and make payments to  
**L. M. RYER,**  
1932 CALHOUN ST.  
SEATTLE  
WASH.

# The SHIFT HUNTERS

AN ORGANIZATION OF STUDENTS OF PLATE RESEARCH PROBLEMS—  
Acting as the PLATE VARIETIES COMMITTEE of the BUREAU ISSUES ASSOCIATION

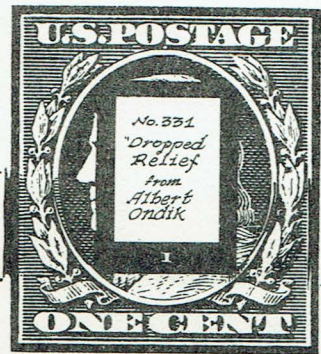
SHIFT  
HUNTER  
LETTER  
**VOL. VI, No 10**  
WHOLE NUMBER 75  
**OCT. 1934**

Subscriptions to Shift Hunter Letters \$2 per year, starting with January

11823  
11896) LR 46



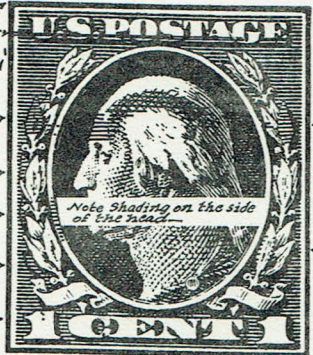
227 No. 526, Type 5. Horizontal Line thru 2 and EN. Submitted by F. JORN, and DELBERT OSBORNE



This is, without doubt, the finest example of the "accidental double" yet reported. As can readily be seen, the duplication extends in a horizontal band across the design.

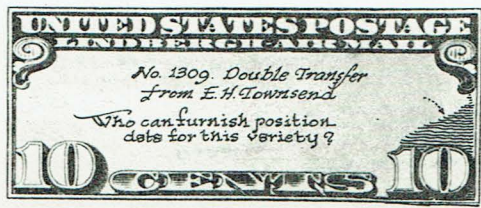
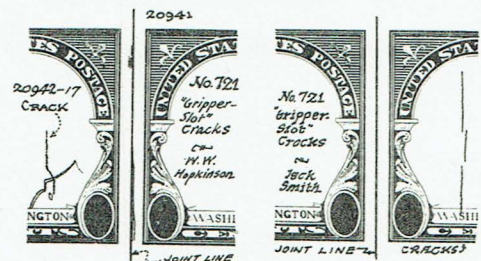


No. 2271. Defective Transfer J 65 W. T. KIEPURA

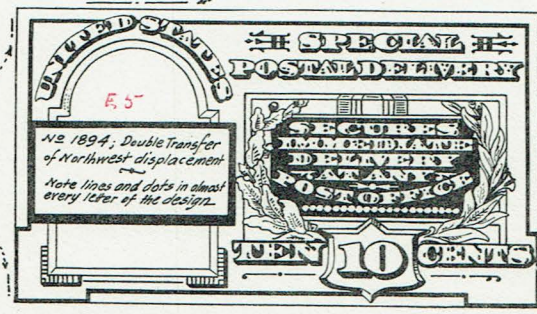


No. 490 - 1/2 Sidewise Coil. This shows a downward displacement of 2 mm. Found by Delbert Osborne. A new and beautiful variety in this common coil.

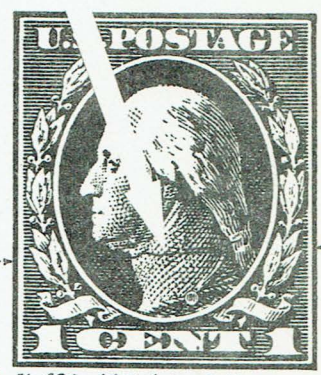
Two NEW AND INTERESTING "GRIPPER-SLOT" CRACKS IN THE "34 STUART" SIDEWISE COIL. (Photo Mats by Alden L. Randall)



No. 1309. Double Transfer From E. H. Townsend. Who can furnish position data for this variety?



No. 1894; Double Transfer of Northwest displacement. Note lines and dots in almost every letter of the design.



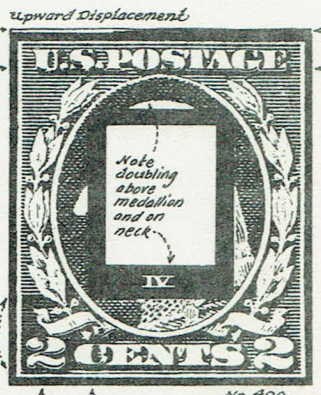
486  
487  
488

No. 486 - 1/2 Endwise Coil. A "Gripper Slot" Crack, found in the stock of a local dealer. Note the spot in the N of CENTS, which is constant on this variety.

10224



\*504 - 54 1917. A "Double Cut" on the Plate Number, from Jack Smith. Who can tell us if this is UL or UR pane?



No. 499. Double Transfer from C. S. Johnson.

IN this 10th Shift Hunter Letter of this year we illustrate some of the most outstanding varieties which have been reported to us. For one, the "Dropped Relief" on the 1¢ 1908 of considerable interest and importance because of the new theory which it illustrates so beautifully. For another, the 2 mm. downward displacement on the #490 1¢ sidewise coil is a fine example of a type of variety which is of frequent occurrence; in which the original transfer is rolled-in on the layout lines intended for another position or for a plate center line. In a number of instances of this type, the affected position has been adjacent to a guide line, and accurate measurement has proven the original entry to have been laid down on the layout line intended for the center line.

REMEMBER... whenever you find plate position data for any variety illustrated in these reports, please notify us at once so that we can complete our records and publish the information for the benefit of our fellow Shift Hunters. This is a cooperative organization and it is only by complete cooperation that our aims may be attained.

Cordially  
L. M. Ryer

As Confucius said nearly 2500 years ago: "One picture is worth ten thousand words!" Use MATS for mounting and illustrating plate varieties. Prices from \$1.25 to \$1.75 per 100 postpaid - less than 2¢ each!

