

## Chapter 15

### Plate Numbers 10000-10999

Plate number 10000 was assigned to a 1c Washington offset plate in February, 1919. Plate 10999 was assigned to a 2c Washington offset plate in March, 1920. The furious rate at which plates were being assigned abated quite a bit when compared to the 9000 section. July 1, 1919, saw the restoration of the 2c rate. Enough 3c offset plates had been assigned and no 3c plates exist in the 10000 section. The third Bureau series dominated with 987 plates being assigned. 920 plates went to press in this section of 1000 plates. 15 of these are still unreported.

The 1c Washington was still being produced by the offset method as this section started. The last 1c offset plate went to press in March, 1919. The last 1c offset plate assigned was 10072 in March, 1919 and this plate was not used. Some of these last 46 1c offset plates are quite difficult and 1 plate (10045) is unreported. May, 1919, saw a resumption of the engraved 1c Washingtons and 272 plates went to press and most of these are easy to find. Sixteen 1c booklet plates are accounted for. 37 coil plates went to press with 8 unreported and again we thank coil waste for saving examples of these plates. The 1c Washington stamp was featured in a very noteworthy event which was the printing of the first rotary press sheet plates. The first rotary sheet plate number is 10151. All 8 of these rotary plates are easy to find.

Production of the 2c Washington stamp went back into gear with 157 plates to press and a few of these plates are really difficult to locate. The famous type Ia appears on plates 10208 and 10209 and these plates are expensive but not scarce. A bottom position plate block from the lower left pane of 10208 has two stamps which are type I and four stamps which are type Ia. This item is very scarce and is a real showpiece. Forty 2c booklet plates went to press and some of these numbers are tough. 77 coil plates were used and 3 are unreported. Again, the coil waste accounts for the majority of these plates that were found.

The official plate records now show something quite unusual. Normally, plate numbers were assigned in sequence. Plate number 10817 was assigned to the 1c Washington stamp on July 19, 1920. But plate 10818 was assigned to the 2c offset on March 5, 1920! In fact, starting with plate 10818, exactly 900 consecutive plates were assigned to the 2c Washington offset! I can only guess that the offset printers were a separate section or division within the Bureau. They were apparently given a block of 900 numbers in early March, 1920 which was about 200 numbers ahead of where the plate number series was at that time. The offset division then worked independently from the division working with intaglio plates. So we see an overlap of activity with these two printing divisions. Wallace Cleland wrote an article in the September, 1989, UNITED STATES SPECIALIST which discusses these unusual plate number assignment practices. The 182 2c Washington offset plates in the 10000 section involved 117 of the type IV design and 65 of the type V design. 95 type IVs and 46

type Vs went to press. Three of the type Vs are unreported. There are many scarce to rare plates in this group of 141 plates. The type V plates are much more difficult.

Before the tidal wave of 2c offsets, a large group of higher value plates was assigned and sent to press. A few of the 7c plates are scarce but most of the rest are fairly easy to obtain.

Eight special delivery plates and four 2c postage due plates were used and are not difficult to find.

The 10000 section is easier than the 9000 section because there are fewer offsets. The coil waste helps to locate the tough coil plates and, except for the coils and offsets, a high percentage of completion is possible. Again, I think an accumulation of 800 plates would be an admirable achievement. The unusual method of assigning offset plate numbers spills in to the 11000 section. Will the BEP do this again? Before we reenter the murky world of the offsets, it might be a good time to take a look at ways to build a collection. The challenge to collectors is in finding the plate number and we will look at collection building possibilities.

## Chapter 15-10000

		10000 Series Totals					
Series	Subject	Plate Type	Assigned	To Press	Available	Unreported	I Have
	(totals)		1000	920	920	15	
3rd Bureau Series							
1911	1c Washington	400F	277	272	272	0	
1911	1c Washington	400R	9	8	8	0	
1911	1c Washington book	360F	16	16	16	0	
1911	1c Washington coil	150R	6	6	6	4	
1911	1c Washington coil	170R	31	31	31	4	
1918	1c Washington offset	400	73	46	46	1	
1911	2c Washington	400F	158	157	157	0	
1911	2c Washington Type Ia	400F	2	2	2	0	
1911	2c Washington book	360F	40	40	40	0	
1911	2c Washington coil	150R	2	2	2	2	
1911	2c Washington coil type III	170R	79	75	75	1	
1920	2c Washington offset type IV	400	117	95	95	0	
1920	2c Washington offset type V	400	65	46	46	3	
1908	4c Washington	400F	4	4	4	0	
1908	5c Washington	400F	28	28	28	0	
1908	6c Washington	400F	8	8	8	0	
1914	7c Washington	400F	20	20	20	0	
1911	8c Franklin	400F	4	4	4	0	
1911	10c Franklin	400F	24	24	24	0	
1914	12c Franklin	400F	4	4	4	0	
1911	15c Franklin	400F	12	12	12	0	
1914	20c Franklin	400F	8	8	8	0	
Special Purpose Issues							
1902	10c Special Delivery	200F	9	8	8	0	
1894	2c Postage Due	400F	4	4	4	0	



10004  
1c Washington  
offset  
not finished



10018-10019  
1c Washington  
offset  
not finished







10031  
1c Washington  
offset  
unreported



10034  
1c Washington  
offset  
rare, not in collection



10039-10040  
1c Washington  
offset  
not finished



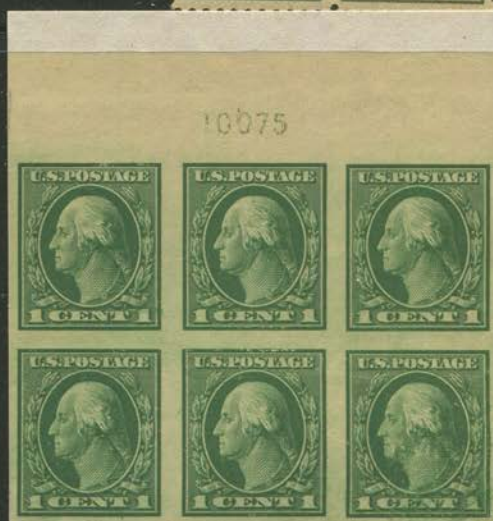
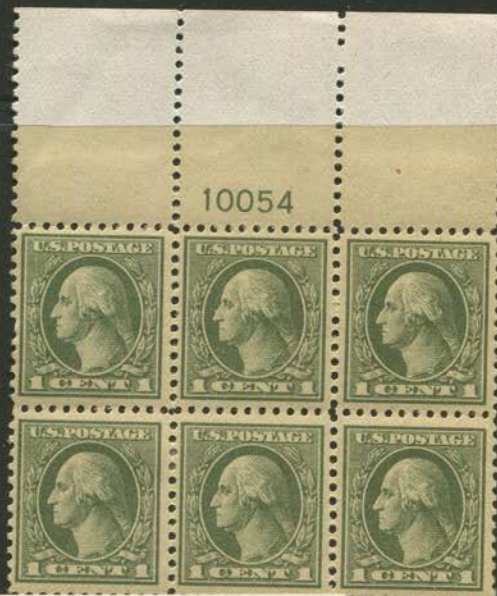


10045  
1c Washington  
offset  
unreported

10046-10048  
1c Washington  
offset  
not finished



10051  
3c Washington  
side coil  
not finished



10055-10072  
1c Washington  
offset  
not finished







10081  
1c Washington  
end coil  
unreported

10082  
1c Washington  
end coil  
rare, not in collection



10088  
2c Washington  
side coil  
unreported



10089  
2c Washington  
side coil  
rare, not in collection



10097  
2c Washington  
side coil  
unreported

10098  
2c Washington  
side coil  
rare, not in collection



























10203  
1c Washington  
offset  
rare, not in collection



10208-10209  
2c Washington  
only two  
type 1a plates













10253



10254



10255



10256



10257



10258



10259



10260



10260



10261



10262



10263



F 10264



10264



10265



10266



10267



10268



10269



10270



10271





10294  
2c Washington  
side coil  
not finished











10315  
2c Washington  
coil waste  
rare, not in collection

10316  
2c Washington  
coil waste  
rare, not in collection











10345  
1c Washington  
side coil  
unreported

10346  
1c Washington  
side coil  
unreported



10349  
1c Washington  
side coil  
unreported







10385  
2c Washington  
side coil  
not used







F 10403



F 10404



F 10405



F 10406



F 10407



10408-10409  
1c Washington  
end coil  
unreported

10410  
1c Washington  
end coil  
rare, not in collection

10411  
3c Washington  
offset  
not finished



10416  
1c Washington  
not finished



F 10418







10438  
1c Washington  
rotary sheet  
not finished





10446  
2c Washington  
coil waste P# blks 10  
(missing)

10447  
2c Washington  
coil waste P# blks 10  
(missing)











10467  
2c Washington  
coil waste  
rare, not in collection



10468  
2c Washington  
coil waste  
rare, not in collection







10487  
2c Washington  
side coil  
unreported

10488  
2c Washington  
coil waste  
rare, not in collection



10490  
2c Washington  
side coil  
not used



10494  
2c Washington  
not finished









10538  
2c Washington  
rare, not in collection



10552  
2c Washington  
rare, not in collection

10553  
2c Washington  
rare, not in collection











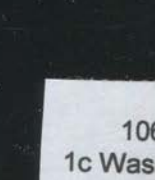
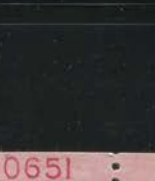
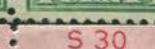
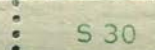
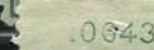




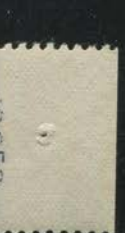
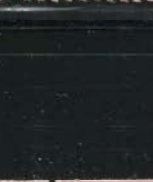
10633  
10c Special Delivery  
not finished







10642  
1c Washington  
side coil  
unreported



10655  
1c Washington  
not finished









10689  
1c Washington  
side coil  
rare, not in collection





10700  
1c Washington  
not finished





F 10715



F 10716



F 10717



10718



F 10719



10720



F 10721



10722  
2c Washington  
side coil  
not finished



10724 S 30



10725 S 30





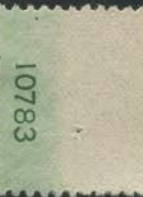
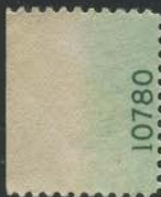






10767-10768  
2c Washington  
end coil  
unreported













10813  
1c Washington  
not finished



10817  
1c Washington  
not finished







10838  
2c Washington  
offset  
not finished







10846-10851  
2c Washington  
offset  
not finished



10859  
2c Washington  
offset  
rare, not in collection



10861  
2c Washington  
offset  
rare, not in collection



10865  
2c Washington  
offset  
not finished



10867-10870  
2c Washington  
offset  
not finished



10875  
2c Washington  
offset  
not finished





10877  
2c Washington  
offset  
not finished

10878



10879



10880



10881



10882



10883



10884



10884



10885



10886



10887



10888



10889  
2c Washington  
offset  
not finished

10890



10891  
2c Washington  
offset  
not finished

10892



10893



10894



10897



10898



10899



10900



10895



10896







10903  
2c Washington  
offset  
not finished



10906  
2c Washington  
offset  
rare, not in collection



10911  
2c Washington  
offset  
not finished



10920  
2c Washington  
offset  
not finished





10924  
2c Washington  
offset  
unreported

10925-10926  
2c Washington  
offset  
not finished



10930  
2c Washington  
offset  
not finished



10935  
2c Washington  
offset  
rare, not in collection



10937-10947  
2c Washington  
offset  
not finished





10951  
2c Washington  
offset  
rare, not in collection

10952  
2c Washington  
offset  
not finished



10963-10964  
2c Washington  
offset  
not finished



10966-10967  
2c Washington  
offset  
not finished







10978  
2c Washington  
offset  
rare, not in collection

10979-10980  
2c Washington  
offset  
not finished

10981  
2c Washington  
offset  
rare, not in collection



10985  
2c Washington  
offset  
not finished



10987  
2c Washington  
offset  
rare, not in collection





10989  
2c Washington  
offset  
rare, not in collection



10992  
2c Washington  
offset  
unreported



10997  
2c Washington  
offset  
rare, not in collection

10998  
2c Washington  
offset  
unreported

