

## Chapter 28

### Plate Numbers 21000-21999

The 21000 section set a record for longevity with plate 21000 assigned in August, 1932 to the 3c Stuart Washington sheet stamps and plate 21999 assigned in July, 1938 to the 2c Adams sheet stamp of the new 5th Bureau series. This section included more historic changes with the ending of the 4th Bureau series and the start of the 5th Bureau series - the Presidentials - in 1938. The rotary press was firmly in control of stamp production. The plates lasted longer and printed many more impressions than the flat plates. Commemorative plates used more than a third of the 1000 plates.

The 4th Bureau series ended its 16 year run in the 21000 section. Only 6 plates on values above 3c went to press and they pose no difficulties for the collector. The 1c Franklin ended its run with 53 plates and most are easy to find. The 1.5c Harding put 36 sheet and 6 coil plates to press. Only plate 21094 on the 1.5c sheet stamp is difficult. The coils can all be found but are not so easy. There was some work going on at the BEP involving experiments with electric-eye plates. These experiments would continue into the new 5th Bureau series. The experiments were only on the 2c Washington sheet stamp and the plate numbers were placed either 3 up or 3 down from the corner of the sheet. 28 of these plates were used and none is scarce. The big news on the coil front was the change in location of the plate numbers from around 1/16th inch from the stamp design to about 1/8th inch. This change was made on the last 24 3c Stuart Washington coil plates and, as a result, only four of these have been found and they are rare. I consider the 20 unreported wide spaced Stuart Washington coil plates to be unavailable to the collector. Collector squawks made a difference because the BEP returned coil plate numbers to their normal location starting with the 5th Bureau series. 349 plates went to press and at least 300 can be fairly easily found.

Plate number 21823, a 1c Washington sheet stamp, is the first plate of the new 5th Bureau series, also known as the Presidentials. Collectors really chased these plate numbers and most plates are very common. Only one 1c coil is unreported. Three of the 1c Washington sheet plates had short runs on the press and are scarce. These plates are 21834, 21864, and 21868. The cheapest of the 3 is cataloged at \$400 in the Durland catalog. Collector interest in these plates is so much less today than when thousands of collectors chased them that I doubt these high prices can be sustained. Only 8 values of the new series appeared, using 103 plates, and a high percentage of completion is easily obtained.

The commemoratives were quite active and 314 plates went to press and all are easy. The Farley special printings occurred in this section and the availability of imperforate varieties add a lot of interest. The National Parks set is very attractive. Most commemorative issues used only a handful of plates and they make it possible to get a lot of plates very quickly.

The air mail stamps remained active with the 6c and 8c winged globe and the Trans-Pacific issues. The 50c Zeppelin stamp was printed from four plates. Most of the interest involved the 6c bicolor eagle air mail. I think this is one of the most attractive stamps ever issued by the US. Two colors meant that collectors could scramble for combinations again. All of the air mail plates used are common. The air mail special delivery stamps are in this section.

The 10c postal savings stamp of 1910 was reissued with two plates used. The very interesting thing about these two plates is the reappearance of the BEP imprint along with a solid five point star!

The 21000 section had 858 plates to press with 838 plates available and 1 plate unreported. A high percentage of completion is possible and 800 plates could be a reasonable first objective. As with the 20000 section, mounting of these plates in plate number order makes a fascinating display. The 4th Bureau series ended in 1938 and the next chapter will take a look at the entire series.

## Chapter 28-21000

		21000 Series Totals					
Series	Subject	Plate Type	Assigned	To Press	Available	Unreported	I Have
	(totals)		1000	858	832	1	
4th Bureau Series							
1922	1c Franklin	400R	74	53	53	0	
1930	1.5c Harding	400R	42	36	36	0	
1930	1.5c Harding coil	170R	8	6	6	0	
1922	2c Washington	400R	40	36	36	0	
1922	3c Lincoln	400R	2	2	2	0	
1932	3c Washington	400R	156	136	136	0	
1932	3c Washington book	360R	10	10	10	0	
1932	3c Washington coil	170R	71	64	44	0	
1922	11c Hayes	400R	5	1	1	0	
1922	12c Cleveland	400R	2	2	2	0	
1925	13c Harrison	400R	1	1	1	0	
1922	15c Statue of Liberty	400R	2	2	2	0	
1922	20c Golden Gate	400R	2	0	0		
5th Bureau Series							
1938	0.5c Franklin	400R	8	6	6	0	
1938	1c Washington	400R	24	23	23	0	
1938	1c Washington coil	170R	13	6	6	1	
1938	1.5c M. Washington	400R	16	15	15	0	
1938	1.5c M. Washington coil	170R	4	4	4	0	
1938	2c Adams	400R	9	9	9	0	
1938	2c Adams coil	170R	4	4	4	0	
1938	3c Jefferson	400R	16	16	16	0	
1938	3c Jefferson book	360R	4	4	4	0	
1938	3c Jefferson coil	170R	4	4	4	0	
1938	4c Madison	400R	4	2	2	0	
1938	4.5c White House	400R	4	2	2	0	
1938	6c J. Q. Adams	400R	4	4	4	0	
1938	8c van Buren	400R	4	4	4	0	
Commemorative							
1932	3c Washington Bicent.	400R	12	6	6	0	
1932	3c Webster	400F	12	12	12	0	
1932	3c Penn	400F	12	12	12	0	
1933	3c Oglethorpe	400F	16	16	16	0	
1933	3c Newburgh	400R	7	6	6	0	
1933	1c Century of Progress	400R	10	10	10	0	
1933	1c Century Souvenir Sheet	225F	3	2	2	0	
1933	3c Century of Progress	400R	8	8	8	0	
1933	3c Century Souvenir Sheet	225F	3	2	2	0	
1933	3c N. R. A.	400R	14	14	14	0	
1933	3c Byrd	200F	4	4	4	0	
1933	3c Byrd Souvenir Sheet	150F	3	1	1	0	
1933	5c Kosciusko	400F	4	4	4	0	
1934	3c Maryland	400F	8	8	8	0	

## Chapter 28-21000

1934	3c Mothers	200F	8	4	4	0
1934	3c Mothers	200R	10	10	10	0
1934	3c Wisconsin	200F	8	8	8	0
1934	1c National Park	50F	1	0	0	
1934	1c National Park	200F	8	8	8	0
1934	1c National Park Souv. Sheet	120F	1	1	1	0
1934	2c National Park	50F	1	0	0	
1934	2c National Park	200F	8	8	8	0
1934	3c National Park	50F	1	0	0	
1934	3c National Park	200F	9	9	9	0
1934	3c National Park Souv. Sheet	120F	1	1	1	0
1934	4c National Park	50F	1	0	0	
1934	4c National Park	200F	4	4	4	0
1934	5c National Park	200F	5	4	4	0
1934	6c National Park	200F	4	4	4	0
1934	7c National Park	200F	4	4	4	0
1934	8c National Park	200F	4	4	4	0
1934	9c National Park	200F	4	4	4	0
1934	10c National Park	200F	5	4	4	0
1934	10c National Park Souv. Sheet	36F	2	2	2	0
1935	3c Connecticut Territory	200R	6	6	6	0
1935	3c San Diego	200R	6	6	6	0
1935	3c Boulder Dam	50F	1	0	0	
1935	3c Boulder Dam	200F	12	12	12	0
1935	3c Michigan	200R	6	4	4	0
1936	3c Texas	200R	4	4	4	0
1936	3c TIPEX Souv. Sheet	4F	1	0	0	
1936	3c TIPEX Souv. Sheet	120F	3	2	2	0
1936	3c Rhode Island	50F	1	0	0	
1936	3c Rhode Island	200R	4	4	4	0
1936	3c Arkansas	50F	1	0	0	
1936	3c Arkansas	200R	4	4	4	0
1936	3c Oregon	50F	1	0	0	
1936	3c Oregon	200R	4	4	4	0
1936	3c Anthony	100F	1	0	0	
1936	3c Anthony	400R	4	4	4	0
1936	1c Army	50F	1	0	0	
1936	1c Army	200R	4	4	4	0
1936	2c Army	200R	4	4	4	0
1936	3c Army	50F	1	0	0	
1936	3c Army	200R	5	4	4	0
1936	4c Army	200R	4	4	4	0
1936	5c Army	200R	4	4	4	0
1936	1c Navy	200R	4	4	4	0
1936	2c Navy	200R	4	4	4	0
1936	3c Navy	200R	4	4	4	0
1936	4c Navy	200R	4	4	4	0
1936	5c Navy	200R	4	4	4	0
1937	5c Virginia Dare	48F	1	0	0	
1937	5c Virginia Dare	192F	5	4	4	0
1937	3c NW Territory	50F	1	0	0	
1937	3c NW terrotory	200R	4	4	4	0



## Chapter 28-21000

1937	3c Constitution	50F	1	0	0	
1937	3c Constitution	200R	4	4	4	0
1937	3c Hawaii	50F	1	0	0	
1937	3c Hawaii	200R	4	4	4	0
1937	3c Alaska	50F	1	0	0	
1937	3c Alaska	200R	4	4	4	0
1937	3c Puerto Rico	50F	1	0	0	
1937	3c Puerto Rico	200R	5	4	4	0
1937	3c Virgin Islands	50F	1	0	0	
1937	3c Virgin Islands	200R	4	4	4	0
1938	3c Ratification	200R	4	4	4	0
1938	3c Delaware	192F	8	8	8	0
Special Purpose Issues						
1932	8c Winged Globe	200R	6	6		0
1933	50c Zeppelin	200F	4	4	4	0
1934	6c Winged Globe	200R	8	6	6	0
1935	25c Trans Pacific	200F	4	4	4	0
1937	20c Trans Pacific	200F	4	4	4	0
1937	50c Trans Pacific	200F	4	4	4	0
1938	6c Eagle frame	100F	12	12	12	0
1938	6c Eagle center	50F	34	34	34	0
1938	6c Eagle center	100F	1	0	0	
1934	16c Air Mail Special Delivery	200F	4	4	4	0
1936	16c Air Mail Spec. Del. frame	100F	4	4	4	0
1936	16c Air Mail Spec. Del. center	50F	8	8	8	0
1910	10c Postal Savings	400F	2	2	2	0
	Experimental EE Dashes	400R	2	0	0	
1922	5c Modeling	100F	1	0	0	
1922	8c Modeling	100F	1	0	0	
1922	11c Modeling	100F	1	0	0	
1922	15c Modeling	100F	1	0	0	
1922	25c Modeling	100F	1	0	0	
1922	30c Modeling	100F	1	0	0	
	P.O. Exhibit	400R	2	0	0	
	P.O. Exhibit	360R	2	0	0	
	P.O. Exhibit	150R	2	0	0	
	P.O. Exhibit	170R	2	0	0	









21027  
3c Washington  
side coil  
not in collection







21054-21059  
3c Washington Bicent  
not used



21062  
3c Washington  
side coil  
not in collection



21063  
3c Washington  
side coil  
not in collection

F 21064



21065



21066



21067



21068



21069



21070



F 21071



21072



21073



21074



21075



21076



21078



21078



21079



21080



21081



21082











21122  
3c Oglethorpe  
not used





21143  
1c Century of Progress  
souvenir sheet  
not used

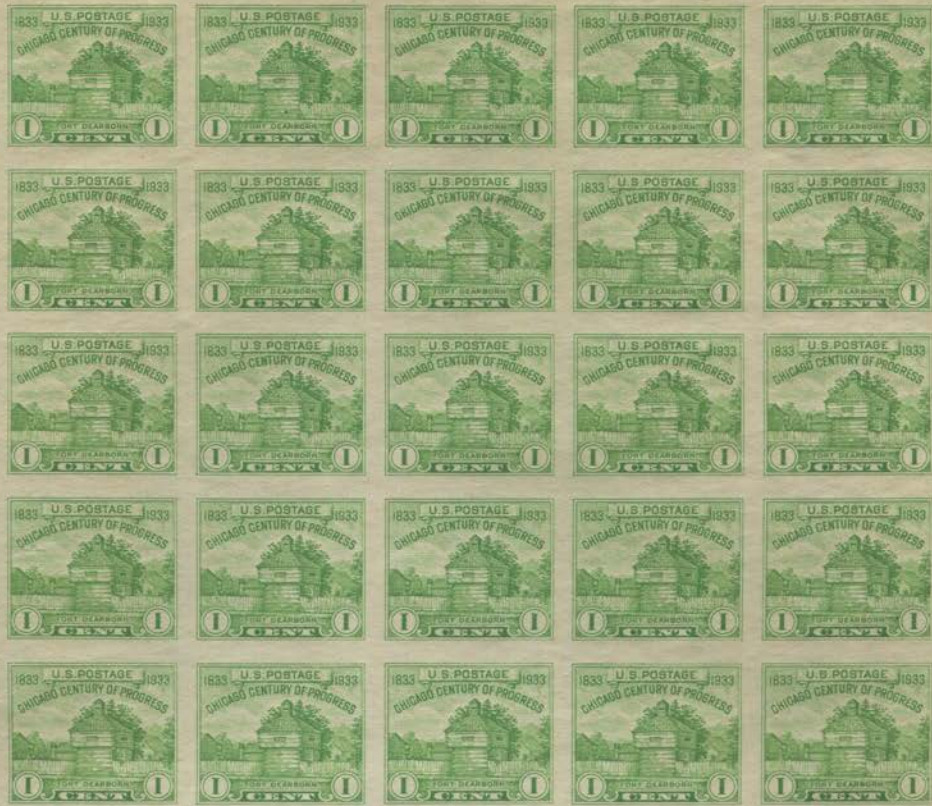
21144  
3c Century of Progress  
souvenir sheet  
not used





UNDER AUTHORITY OF JAMES A. FARLEY, POSTMASTER GENERAL AT A CENTURY OF PROGRESS

PRINTED BY THE TREASURY DEPARTMENT, BUREAU OF ENGRAVING AND PRINTING



IN COMPLIMENT TO THE AMERICAN PHILATELIC SOCIETY FOR ITS CONVENTION AND EXHIBITION

CHICAGO, ILLINOIS, AUGUST 1933. PLATE NO. 21145

UNDER AUTHORITY OF JAMES A. FARLEY, POSTMASTER GENERAL AT A CENTURY OF PROGRESS

PRINTED BY THE TREASURY DEPARTMENT, BUREAU OF ENGRAVING AND PRINTING



IN COMPLIMENT TO THE AMERICAN PHILATELIC SOCIETY FOR ITS CONVENTION AND EXHIBITION

CHICAGO, ILLINOIS, AUGUST 1933. PLATE NO. 21146





21147



21148



21149



21150



21151



21152



21153



21154



21155



21156



21157



21158



ATE NO. 21159



ATE NO. 21160



21161



21162



21163



21164



21165



21166



21167



21168



UNDER AUTHORITY OF JAMES A. FARLEY, POSTMASTER GENERAL AT A CENTURY OF PROGRESS

PRINTED BY THE TREASURY DEPARTMENT, BUREAU OF ENGRAVING AND PRINTING



IN COMPLIMENT TO THE AMERICAN PHILATELIC SOCIETY FOR ITS CONVENTION AND EXHIBITION

CHICAGO, ILLINOIS, AUGUST 1933. PLATE NO. 21159

UNDER AUTHORITY OF JAMES A. FARLEY, POSTMASTER GENERAL AT A CENTURY OF PROGRESS

PRINTED BY THE TREASURY DEPARTMENT, BUREAU OF ENGRAVING AND PRINTING



IN COMPLIMENT TO THE AMERICAN PHILATELIC SOCIETY FOR ITS CONVENTION AND EXHIBITION

CHICAGO, ILLINOIS, AUGUST 1933. PLATE NO. 21160





21169



21170



21171



21172



21173



21174



21175



21176



21177



21178



21179



08112



21181



21182

21183  
3c Byrd  
souvenir sheet  
not used

PRINTED BY THE TREASURY  
BUREAU OF ENGRAVING



SENT TO THE  
EXHIBITION OF 1934

NEW YORK, N.Y., FEBRUARY 10-18, 1934  
PLATE NUMBER 21184



UNDER AUTHORITY OF  
JAMES A. FARLEY, POSTMASTER GENERAL

PRINTED BY THE TREASURY DEPARTMENT,  
BUREAU OF ENGRAVING AND PRINTING



IN COMPLIMENT TO THE TRANS-MISSISSIPPI  
PHILATELIC EXPOSITION AND CONVENTION,

OMAHA, NEBRASKA, OCTOBER, 1934.  
PLATE NUMBER 21341

UNDER AUTHORITY OF  
JAMES A. FARLEY, POSTMASTER GENERAL

PRINTED BY THE TREASURY DEPARTMENT,  
BUREAU OF ENGRAVING AND PRINTING,



IN COMPLIMENT TO THE AMERICAN PHILATELIC SOCIETY  
FOR ITS CONVENTION AND EXHIBITION,

ATLANTIC CITY, NEW JERSEY, AUGUST 1934.  
PLATE NUMBER 21303

PRINTED BY THE TREASURY DEPARTMENT,  
BUREAU OF ENGRAVING AND PRINTING



IN COMPLIMENT TO THE  
NATIONAL STAMP EXHIBITION OF 1934

NEW YORK, N.Y., FEBRUARY 10-18, 1934  
PLATE NUMBER 21184





21187  
3c Byrd  
souvenir sheet  
not used



21192-21195  
3c Washington  
not finished



21200-21201  
experimental plate  
not used



21206-21209  
3c Mother's Day  
flat plates  
not used











21231  
1c Franklin  
not finished





F 21242



F 21243



21244



F 21245



F 21246



F 21247



F 21248



F 21249



21250



F 21251



21252



F 21253



21254



21255



F 21256



F 21257





21258



21259



21260



21261



F 21262



21263



F 21264



F 21265



21266



21267



21268



21269



21270



21271



21272



21273





21274



F 21275



21276



F 21277



F 21278



21279



21280



F 21281



21282



21283



21284



21285



21286



21287



21288



21289



21290



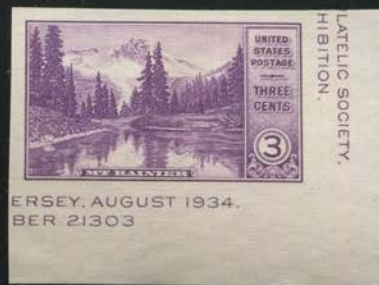
21291







21302  
5c National Park  
not used









21327



21328



21329



F 21330



F 21331



F 21332



F 21333



21334



21335



F 21336



F 21337



F 21339



21338  
10c National Park  
not used

21340



PRINTED BY THE TREX  
BUREAU OF ENGRAVING



OMAHA, NEBRASKA, OCTOBER, 1934.  
PLATE NUMBER 21341

THE TRANS-MISSISSIPPI  
CONVENTION,

21342























21405



21406



21407



21408



21409



21410



21411



21412



21413



21414



21415









21443-21446  
11c Hayes  
not used





21456



F 21457



21458



F 21459



F 21460



F 21461



F 21462



F 21463



21464



F 21465



F 21466



21467

21468  
3c Michigan  
not used



21469





21470



21471

21472  
3c Michigan  
not used



21473



21474



21475



21476













21505-21510  
P.O. Exhibit  
not used



21517-21518  
P.O. Exhibit  
not used







21527-21528  
1.5c Harding  
side coil  
not used



21531-21536  
Modeling plates  
not used











21563  
3c TIPEX  
souvenir sheet  
not used











21592  
3c Washington  
wide spaced side coil  
rare, not in collection



21593  
3c Washington  
wide spaced side coil  
unreported



21596  
3c Washington  
wide spaced side coil  
unreported

21597  
3c Washington  
wide spaced side coil  
unreported















21635  
3c Army  
not finished





21639  
3c Washington  
wide spaced side coil  
unreported

21640  
3c Washington  
wide spaced side coil  
unreported

21641  
3c Washington  
wide spaced side coil  
unreported

21642  
3c Washington  
wide spaced side coil  
unreported

21643  
3c Washington  
wide spaced side coil  
unreported

21644  
3c Washington  
wide spaced side coil  
unreported

21645  
3c Washington  
side coil  
not finished

21646  
3c Washington  
wide spaced side coil  
unreported

21647  
3c Washington  
wide spaced side coil  
unreported

21648  
3c Washington  
wide spaced side coil  
rare, not in collection









21663-21666  
1c Franklin  
not used



21671  
3c Washington  
not finished



21674  
3c Washington  
not finished

21675  
3c Washington  
wide spaced side coil  
rare, not in collection











21690  
3c TIPEX  
souvenir sheet  
not used



UNDER THE AUTHORITY OF  
JAMES A. FARLEY, POSTMASTER GENERAL.

PRINTED BY THE  
TREASURY DEPARTMENT,  
BUREAU OF ENGRAVING AND PRINTING.

IN COMPLIMENT TO THE  
43<sup>RD</sup> ANNUAL CONVENTION OF THE  
SOCIETY OF PHILATELIC AMERICANS.



ASHEVILLE, N.C., AUGUST 26-28, 1937.  
PLATE NUMBER 21695

PRINTED BY THE  
TREASURY DEPARTMENT,  
BUREAU OF ENGRAVING AND PRINTING.

IN COMPLIMENT TO THE  
43<sup>RD</sup> ANNUAL CONVENTION OF THE  
SOCIETY OF PHILATELIC AMERICANS.



ASHEVILLE, N.C., AUGUST 26-28, 1937.  
PLATE NUMBER 21696





21701  
5c Virginia Dare  
not used

21702  
3c Washington  
wide spaced side coil  
unreported

21703  
3c Washington  
wide spaced side coil  
unreported

21704  
3c Washington  
wide spaced side coil  
unreported







21709  
3c Constitution  
not used



21719  
3c Alaska  
not used



21720  
3c Hawaii  
not used



21725  
3c Puerto Rico  
not used

21726  
5c Virginia Dare  
not used

21727  
3c N. W. Territory  
not used

21728  
3c Rhode island  
not used

21729  
3c Oregon  
not used



21734  
3c Virgin Islands  
not used



21735  
1c Army  
not used

21736  
3c Army  
not used

21737  
3c Arkansas  
not used

21738  
3c Anthony  
not used

21739  
3c Boulder Dam  
not used

21740  
1c National Park  
not used

21741  
2c National Park  
not used

21742  
3c National Park  
not used

21743  
4c National Park  
not used



21746-21747  
1c Franklin  
not used

21748  
3c Washington  
(missing)



21751  
3c Puerto Rico  
not used



21756-21757  
1c Franklin  
not used



21760-21761  
1c Franklin  
not used







21763



21764



21765



766



21767



21768



21769

21770-21771  
1.5c Harding  
not used



21772



21773

21774-21775  
3c Washington  
not used

21776-21777  
1.5c Harding  
not used

21778-21779  
1c Franklin  
not used

21780-21781  
3c Washington  
not used

21782-21785  
1c Franklin  
not used

21786-21789  
2c Washington  
not used

21790  
3c Washington  
wide spaced side coil  
rare, not in collection

21791  
3c Washington  
wide spaced side coil  
unreported



21792  
3c Washington  
wide spaced side coil  
unreported

21793-21794  
1c Franklin  
not used

21795-21796  
1.5c Harding  
not used

21797-21798  
20c Golden Gate  
not used

21799  
3c Washington  
wide spaced side coil  
unreported

21800  
3c Washington  
wide spaced side coil  
unreported

21801-21802  
3c Washington  
not used

21803  
3c Washington  
wide spaced side coil  
unreported

21804  
3c Washington  
wide spaced side coil  
unreported

21805-21806  
3c Washington  
side coil  
not used

21807-21808  
6c Globe Airmail  
not used

21809-21810  
1c Franklin  
not used

21811-21814  
3c Washington  
side coil  
not used

21815-21822  
3c Washington  
not used





21827  
1c Washington  
not finished











21864  
1c Washington  
rare, not in collection



21872  
1c Washington  
side coil  
not used



21875  
1.5c M. Washington  
not used







21886  
.5c Franklin  
not used



21890  
.5c Franklin  
not used











21923-21924  
1c Washington  
side coil  
not used





21933  
6c Eagle Airmail  
center  
not used



21946-21947  
1c Washington  
side coil  
not used





TOP  
F 21950



TOP  
F 21951



F 21952



F 21953



F 21954



F 21955



21956



21957



F 21958



21959



21962-21963  
4c Madison  
not used



21974-21975  
4.5c White House  
not used



21976-21977  
1c Washington  
side coil  
not finished



21979  
1c Washington  
side coil  
rare, not in collection









