

## Chapter 37

### Plate Numbers 28000-28999

Plate number 28000 was assigned in December, 1964, to the 5c Washington sheet stamp of 1963. The section ended in February, 1967, when plate 28999 was assigned to the 5c Erie Canal commemorative stamp. Two major events occurred in this section. The first was the introduction of the Prominent Americans series, or the seventh Bureau series. The second event was the introduction of a technological process at the BEP where offset lithography was combined with intaglio printing. This process began with the Homemakers stamp which had printing plates in the 27000 section. But the Homemakers offset plates were not assigned numbers in the postage stamp series. The 5c Stevenson stamp of 1965 was the first stamp in over 40 years to have offset plates assigned in the postage stamp plate number series. A decision was made to place the offset plate numbers on the margins of the sheet so they would be trimmed during production of post office panes. Therefore, the offset plate numbers are not available unless a production error causes a miscut and this did happen on rare occasions. I wish the offset numbers had been printed on the issued panes. It would have made for a merry chase for combinations and would have given collectors many more plate numbers to accumulate.

The Liberty series began to approach the end with the announcement of a new regular issue. Only 19 plates were assigned to the 1954 series stamps with 136 numbers assigned to the 1963 stamps. 126 plates went to press with 28 unreported coils. The 4c Lincoln sheet plates 28006 and 28007 had only 6553 impressions and are known only precancelled. These plates are scarce. Since most of these plates are booklets and coils, locating a lot of these late Liberty series plates is a tough task.

The seventh Bureau series made an appearance in 1965 after an 11 year span for the sixth Bureau series. It is interesting to note that there was a new 5c Washington sheet and coil stamp for the new 1965 issue, but the 1963 Washington design was retained for the booklet stamps. 181 plates in the new series were assigned with 177 to press. 36 coil plates are unreported. The sheet plates are easy to locate and the coils, as usual, are difficult. The BEP was continuing experiments with tagging stamps and many of these plates are available both with and without the luminescent tagging. Some plates are common one way and scarce the other way. I never could get excited about the tagging since it is mostly invisible without special lighting equipment.

The 5c flag definitive production continued with 19 plates to press with none being really difficult.

As with the 27000 section, most of the news and action concerned the commemorative plates. The new printing technique involved combining intaglio and offset printing. Starting with the 1965 5c Stevenson stamp, the offset plates were assigned numbers in the postage stamp plate number series but the numbers were

trimmed from the finished product. This meant there are a lot more gaps in the consecutive number series for collectors. The 5c Stevenson stamp used 9 intaglio plates and 32 offset plates. If these offset plates had been available to collectors, there would have been some real rarities since some of these plates had very few impressions.

The BEP still made frequent use of multiple intaglio passes since many of the stamps in this section had two plate numbers. Collectors were excited by the 1965 Florida stamp which required three intaglio passes. This was the first stamp to have three plate numbers on the post office pane! The BEP took care to avoid massive combinations and rarities and the Florida stamp ended up with 32 combinations. There could have been 64 combinations since 4 plates of each 'color' were used.

The 1964 Register and Vote stamp made a return appearance with 24 plates. Some of these plates had relatively few impressions, but they were avidly collected and none is very scarce. The 6th International Philatelic Exhibition had a 5c stamp and 5c souvenir sheet printed using the intaglio and offset method. The SIPEX souvenir sheets had the plate numbers trimmed off but production errors did occur. As a result, all four intaglio plates and 2 of the offset plates of the souvenir sheet have been found. These 6 plates are real rarities. 575 commemorative plates were assigned in the 28000 section. 427 went to press and 333 are available to collectors. All but the 6 SIPEX souvenir sheet plates are easily available.

Two special delivery and 48 air mail plates went to press and there are no problems with these except for two unreported 8c Capitol coil plates.

The 28000 section saw 799 plates to press with 705 available to collectors. With just 66 unreported plates, this section is the easiest section since the 25000 section. The 705 plates available to collectors is the fewest of any section so far. Will this trend continue? Inquiring minds may want to read the next chapter for insights into this puzzle but they will have wait an additional chapter because we next will look at the plate numbers of the Liberty series.

## Chapter 37-28000

		28000 Series Totals					
Series	Subject	Plate Type	Assigned	To Press	Available	Unreported	I Have
	(totals)		1000	799	705	69	
6th Bureau Series (Liberty Series)							
1954	1.25c Palace of Governors coil	432R	2	2	2	2	
1954	4c Lincoln	400R	9	5	5	0	
1954	20c Monticello	400R	4	4	4	0	
1954	25c Revere	400R	2	0	0		
1954	25c Revere coil	432R	2	2	2	0	
1963	1c Jackson	400R	2	2	2	0	
1963	1c Jackson coil	432R	2	2	2	0	
1963	5c Washington	400R	18	0	0		
1963	5c Washington book slogan 3	360R	41	39	39	0	
1963	5c Washington coil	432R	73	70	70	29	
7th Bureau Series (Prominent Americans)							
1965	1.25c Gallatin	400R	2	2	2	0	
1965	2c Wright	400R	4	4	4	0	
1965	4c Lincoln	400R	30	29	29	0	
1965	4c Lincoln coil	432R	11	10	10	2	
1965	5c Washington	400R	38	38	38	0	
1965	5c Washington coil	432R	80	80	80	34	
1965	6c Roosevelt	400R	4	4	4	0	
1965	8c Einstein	400R	5	4	4	0	
1965	10c Jackson	400R	2	2	2	0	
1965	25c Douglass	400R	3	2	2	0	
1965	\$5 Moore	400R	2	2	2	0	
Special Definitives							
1963	5c Flag	400R	21	19	19	0	
Commemorative							
1964	5c Register & Vote	200R	29	24	24	0	
1965	5c Appomattox	200R	12	6	6	0	
1965	5c Physical Fitness	200R	3	3	3	0	
1965	5c Cancer I	200R	7	6	6	0	
1965	5c Cancer II	200R	7	6	6	0	
1965	5c Magna Carta I	200R	5	4	4	0	
1965	5c Magna Carta II	200R	5	4	4	0	
1965	5c Churchill	200R	8	4	4	0	
1965	5c Dante Alighieri	200R	4	4	4	0	
1965	5c Salvation Army	200R	7	6	6	0	
1965	5c U. N. Cooperation	200R	7	6	6	0	
1965	11c Telecommunications I	200R	3	2	2	0	
1965	11c Telecommunications II	200R	3	2	2	0	
1965	5c Fulton	200R	7	6	6	0	
1965	5c Florida 1	200R	7	4	4	0	
1965	5c Florida 2	200R	6	4	4	0	
1965	5c Florida 3	200R	9	4	4	0	

## Chapter 37-28000

1965	5c Christmas	200R	20	17	17	0	
1965	5c Hoover	200R	4	4	4	0	
1965	5c Traffic Safety 1	200R	7	6	6	0	
1965	5c Traffic Safety 2	200R	7	4	4	0	
1965	5c Copley	200R	8	6	6	0	
1965	5c Stevenson	200R	11	9	9	0	
1965	5c Stevenson offset	200L	41	32	0		
1966	5c Indiana 1	200R	5	4	4	0	
1966	5c Indiana 2	400R	8	6	6	0	
1966	5c Migratory Bird 1	200R	5	4	4	0	
1966	5c Migratory Bird 2	200R	5	4	4	0	
1966	5c Humane Treatment	200R	11	9	9	0	
1966	5c Humane Treatment offset	200R	9	5	0		
1966	5c Circus 1	200R	7	6	6	0	
1966	5c Circus 2	200R	6	4	4	0	
1966	5c SIPEX	200R	7	6	6	0	
1966	5c SIPEX offset	200R	8	5	0		
1966	5c SIPEX Sheet	400R	5	4	4	0	
1966	5c SIPEX Sheet offset	200R	14	12	2	0	
1966	5c Bill of Rights 1	200R	7	6	6	0	
1966	5c Bill of Rights 2	200R	7	6	6	0	
1966	5c National Parks	200R	7	6	6	0	
1966	5c National Parks offset	200L	3	1	0		
1966	5c Marine Corps	200R	9	8	8	0	
1966	5c Marine Corps offset	200R	9	6	0		
1966	5c Polish Millenium	200R	4	4	4	0	
1966	5c Johnny Appleseed 1	200R	5	4	4	0	
1966	5c Johnny Appleseed 2	200R	7	6	6	0	
1966	5c Women's Clubs 1	200R	9	8	8	0	
1966	5c Women's Clubs 2	200R	7	6	6	0	
1966	5c Christmas	200R	39	29	29	0	
1966	5c Christmas offset	200R	31	21	0		
1966	5c Beautify U.S. 1	200R	7	4	4	0	
1966	5c Beautify U.S. 2	200R	10	8	8	0	
1966	5c Savings Bonds	200R	11	8	8	0	
1966	5c Savings Bonds offset	200R	12	10	0		
1966	5c Mary Cassatt 1	200R	7	6	6	0	
1966	5c Mary Cassatt 2	200R	7	4	4	0	
1966	5c Great River Road	200R	14	10	10	0	
1966	5c Great River Road offset	200R	8	4	0		
1967	5c National Grange 1	200R	5	4	4	0	
1967	5c National Grange 2	200R	5	4	4	0	
1967	5c Erie Canal	200R	6	4	4	0	
1967	5c Mississippi 1	200R	1	0	0		
1967	5c Mississippi 2	200R	1	0	0		
1967	5c Canada 1	200R	10	8	8	0	
1967	5c Canada 2	200R	10	0	0		
Special Purpose Issues							
1959	25c Lincoln Air Mail	200R	2	2	2	0	
1961	13c Liberty Bell	200R	5	4	4	0	
1961	15c Statue Of Liberty	200R	17	10	10	0	



## Chapter 37-28000

1963	8c Capitol	400R	12	12	12	0	
1963	8c Capitol book slogan 3	360R	20	18	18	0	
1963	8c Capitol coil	432R	9	2	2	2	
1967	8c Alaska	200R	1	0	0		
1954	30c Special Delivery	200R	2	2	2	0	

28000-28001  
5c Washington  
not used



28011-28012  
25c Revere  
side coil  
rare, not in collection







28015  
5c Appomattox  
master plate  
not used

28016-28019  
5c Washington  
not used

28020  
5c Appomattox  
not used



28023  
5c Appomattox  
not used



28026-28027  
5c Cancer  
master plates  
not used

28028  
5c Appomattox  
not used

28029  
8c Airmail book  
not used









28045  
8c Airmail  
side coil  
unreported

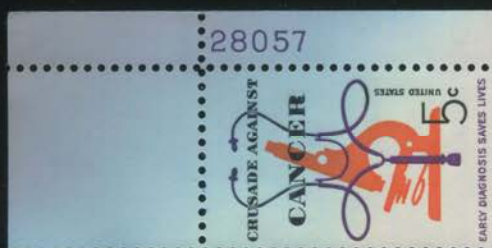
28046  
8c Airmail  
side coil  
not used



28052-28053  
5c Washington  
side coil  
unreported



28056  
5c Appomattox  
master plate  
not used



28059-28058  
5c Washington  
side coil



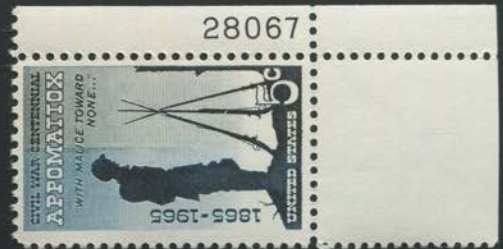




28061  
5c Appomattox  
master plate  
not used

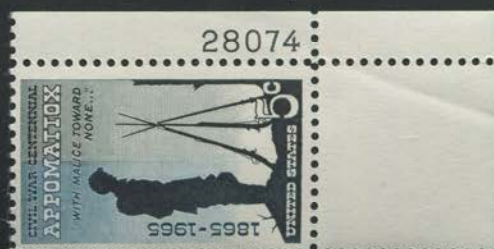


28065-28066  
5c Washington  
not used



28069-28070  
5c Magna Carta  
master plates  
not used

28072-28071  
5c Washington  
side coil







28076-28077  
5c Washington  
not used

28078-28079  
5c Washington  
side coil  
rare, not in collection







28094-28097  
5c Washington  
not used

28098-28101  
5c Churchill  
not used

28102-28103  
5c Washington  
not used







28112  
5c Salvation Army  
master plate  
not used



28119  
5c U.N. Cooperation  
master plate  
not used

28120-28121  
1.25c Palace Governors  
side coil  
unreported





28125-28126  
5c Washington  
side coil  
unreported



28128-28129  
11c Telecommunications  
master plates  
not used



28134-28135  
5c Washington  
not used

28137-28136  
5c Washington  
side coil





28138  
5c Fulton  
master plate  
not used



28140-28142  
5c Florida  
master plates  
not used



28146  
5c Christmas  
master plate  
not used



28154  
5c Florida  
not used





28156  
5c Florida  
not finished

28157  
5c Florida  
not finished



28165  
5c Florida  
not used



28167  
5c Florida  
not finished





28170-28171  
5c Florida  
not finished



28180-28181  
5c Traffic  
master plates  
not used



28186  
5c Copley  
master plate  
not used







28196  
5c Traffic Safety  
not used



28199-28200  
5c Washington  
side coil  
unreported



28203-28202  
5c Washington  
side coil





28204  
5c Traffic Safety  
not used

28205  
5c Copley  
master plate  
not used



28208-28209  
5c Washington  
side coil







28220  
5c Stevenson  
master plate  
not used



28222-28223  
4c Lincoln  
not finished



28225-28226  
4c Lincoln  
not finished

28227-28229  
5c Stevenson  
offset plates  
not finished





28236-28238  
5c Stevenson  
offset plates  
used, unavailable



28249-28250  
5c Stevenson  
offset plates  
used, unavailable



28252  
5c Stevenson  
offset plates  
not used

28253-28255  
5c Stevenson  
offset plates  
used, unavailable



28257  
5c Stevenson  
offset plates  
used, unavailable



28260-28270  
5c Stevenson  
offset plates  
unavailable



28271-28272  
4c Lincoln  
side coil



28273-28309  
4c Lincoln  
side coil



28274  
4c Lincoln  
side coil  
not finished



28276-28278  
5c Stevenson  
offset plates  
unavailable

28279  
5c Stevenson  
not used

28280  
8c Airmail  
side coil  
unreported



28282-28287  
5c Stevenson  
offset plates  
unavailable

28288-28289  
5c Washington  
side coil  
unreported

28291-28290  
5c Washington  
side coil





28292-28293  
5c Stevenson  
offset plates  
unavailable



28295  
5c Christmas  
not used

28296-28298  
5c Stevenson  
offset plates  
unavailable

28299  
5c Christmas  
not used

28300-28302  
5c Stevenson  
offset plates  
unavailable



28309  
4c Lincoln  
side coil  
see plate 28273

28310-28311  
5c Indiana  
master plates  
not used



28316  
8c Airmail book  
not finished





28321-28320  
5c Washington  
side coil



28322-28323  
5c Washington  
side coil



28325-28324  
5c Washington  
side coil







28337  
5c Indiana  
not finished











28376-28377  
5c Migratory Birds  
master plates  
not used



28386-28387  
5c Washington  
side coil  
rare, not in collection

28388-28389  
5c Washington  
side coil  
unreported

28390-28391  
5c Washington  
side coil





28393-28392  
5c Washington  
side coil



28397  
8c Einstein  
not finished







28412  
5c Humane Treatment  
master plate  
not used



28414  
5c Humane Treatment  
offset plates  
unavailable

28415-28416  
5c Washington  
side coil







28421-28422  
5c Humane Treatment  
offset plates  
unavailable



28426  
5c Humane Treatment  
not used

28427-28428  
5c Circus  
master plates  
not used



28434-28439  
5c Humane Treatment  
offset plates  
unavailable





28444-28443  
5c Washington  
side coil



28446-28447  
5c Washington  
side coil  
unreported

28448  
5c SIPEX  
master plate  
not used



28451-28452  
5c Washington  
side coil  
unreported



28454-28455  
5c Washington  
side coil  
unreported







28464-28465  
5c Washington  
side coil  
unreported







28474



28475



28476

28477  
5c Washington  
side coil  
unreported

28478  
5c Washington  
side coil  
not finished



28479



28480



28481



28482

28483  
5c SIPEX Sheet  
master plate  
not used



28484



28485



28486

28487  
5c Circus  
master plate  
not used



28488

28489-28490  
5c Washington  
side coil  
unreported



28491



28493  
5c SIPEX Sheet  
very rare

28493  
SIXTH INTERNATIONAL PHILATELIC EXHIBITION, WASHINGTON D.C. 1966



28494-28495  
5c SIPEX  
offset plates  
unavailable





28498

SIXTH INTERNATIONAL PHILATELIC EXHIBITION, WASHINGTON D.C. 1966



DISCOVER AMERICA

*Lawrence F. Obvin* POSTMASTER GENERAL OF THE UNITED STATES

28498  
5c SIPEX Sheet  
very rare

28501

SIXTH INTERNATIONAL PHILATELIC EXHIBITION, WASHINGTON D.C. 1966



DISCOVER AMERICA

*Lawrence F. Obvin* POSTMASTER GENERAL OF THE UNITED STATES

28499-28500  
25c Revere  
not used

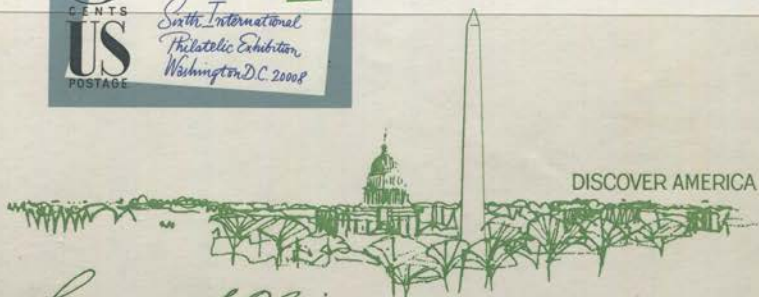
28501  
5c SIPEX Sheet  
very rare

28502-28504  
5c Washington  
side coil  
unreported

28505  
5c Washington  
side coil  
not finished



SIXTH INTERNATIONAL PHILATELIC EXHIBITION, WASHINGTON D.C. 1966



*Lawrence F. Obrien* POSTMASTER GENERAL OF THE UNITED STATES

28508

28508  
5c SIPEX Sheet  
very rare



28509-28510  
5c SIPEX Sheet  
offset plates  
unavailable



28515-28516  
5c SIPEX Sheet  
offset plates  
unavailable

28517  
5c Washington book  
not finished



28519-28520  
5c SIPEX  
offset plates  
unavailable

28521  
5c Register & Vote  
not used



28523-28529  
5c SIPEX Sheet  
offset plates  
unavailable

28526  
5c SIPEX Sheet  
rare offset plate  
not in collection

28527  
5c SIPEX Sheet  
rare offset plate  
see next page

28530  
5c Register & Vote  
not used



28532-28533  
5c SIPEX  
offset plates  
unavailable

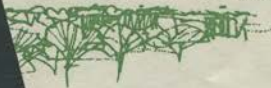


28501

EXHIBITION, WASHINGTON D.C. 1966



DISCOVER AMERICA



POSTMASTER GENERAL OF THE UNITED STATES

PL.28527

SIXTH INTERNATIONAL PHILATELIC EXHIBITION, WASHINGTON D.C. 1966



DISCOVER AMERICA



*Lawrence F. Obrien*

POSTMASTER GENERAL OF THE UNITED STATES

28527  
5c SIPEX Sheet  
very rare



28534  
5c Washington  
side coil  
rare, not in collection

28535  
5c Washington  
side coil  
unreported



28537  
5c Register & Vote  
not used



28540  
5c Register & Vote  
not used

28541-28542  
5c SIPEX  
offset plates  
unavailable



28544-28545  
5c Bill of Rights  
master plates  
not used

28546-28547  
5c Washington  
side coil  
unreported



28549-28552  
5c Washington  
side coil  
unreported

28553  
5c Washington  
side coil  
not finished





28555-28556  
5c Washington  
side coil  
unreported



28559-28558  
5c Washington  
side coil



28563  
5c Washington  
side coil  
unreported

28564-28565  
5c Washington  
side coil  
rare, not in collection

28566  
5c Washington  
side coil  
unreported







28577  
5c Register & Vote  
not finished





28583-28586  
5c Washington  
side coil  
unreported







28596-28597  
5c Washington  
side coil  
unreported



28605  
5c SIPEX Sheet  
offset plates  
unavailable







28614  
5c National Parks  
master plate  
not used







28624  
5c Marine Corps  
master plate  
not used



28627  
13c Liberty Bell Airmail  
not finished



28633-28634  
5c J. Appleseed  
master plates  
not used

28635-28636  
15c Liberty Airmail  
not used







28641  
15c Liberty Airmail  
not used



28643  
15c Liberty Airmail  
not used



28650  
5c National Park Service  
offset plate  
unavailable





28653-28654  
8c Airmail  
side coil  
not used



28656  
5c Marine Corps  
offset plates  
unavailable



28658  
5c Marine Corps  
offset plates  
unavailable



28660-28661  
15c Liberty Airmail  
not used

28662-28663  
5c Women's Clubs  
master plates  
not used



28665  
15c Liberty Airmail  
not used

28666-28667  
5c National Parks  
offset plates  
unavailable







28687-28691  
5c Marine Corps  
offset plates  
unavailable

28692  
5c Christmas  
master plate  
not used

28693-28696  
8c Airmail  
side coil  
not used



28697-28698  
5c Marine Corps  
offset plates  
unavailable



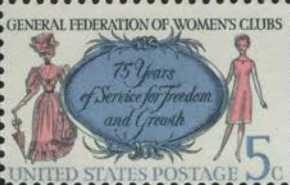
28701-28702  
5c Washington  
side coil  
rare, not in collection



28705



28706



28707



28708

28709-28710  
5c SIPEX Sheet  
offset plates  
unavailable



28711



28712



28713



28714



28715

28716-28717  
5c Beautification  
master plates  
not used





28725  
5c Savings Bonds  
master plate  
not used



28730  
5c Christmas  
master plate  
not used

28731  
5c Savings Bonds  
master plate  
not used





28734  
5c Beautification  
not finished



28737-28738  
5c Mary Cassatt  
master plates  
not used



28742  
5c Beautification  
not used



28744  
5c Beautification  
not used



28746  
5c Christmas  
offset plates  
unavailable



28750  
5c Christmas  
offset plates  
unavailable





28755  
5c Mary Cassatt  
master plate  
not used



28757  
5c Savings Bonds  
not used



28764-28765  
5c Christmas  
offset plates  
unavailable







28770  
5c Mary Cassatt  
master plate  
not used



28773-28774  
5c Christmas  
offset plates  
unavailable



28777-28778  
5c Christmas  
offset plates  
unavailable



28783-28784  
5c Christmas  
offset plates  
unavailable



28787  
5c Christmas  
offset plates  
unavailable





28789  
5c River Road  
master plate  
not used

28790-28791  
5c Christmas  
offset plates  
unavailable



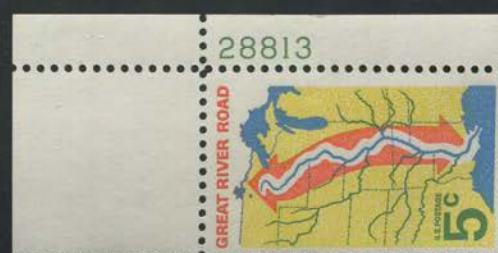
28794-28801  
5c Christmas  
offset plates  
unavailable



28803-28804  
5c Savings Bonds  
offset plates  
unavailable



28811-28812  
5c Washington  
side coil  
unreported



28814  
5c Christmas  
offset plates  
unavailable





28819  
5c Christmas  
offset plates  
unavailable



28823-28824  
5c Savings Bonds  
offset plates  
unavailable







28835  
5c River Road  
not used



28837-28838  
5c Savings Bonds  
offset plates  
unavailable



28841-28842  
5c Savings Bonds  
offset plates  
unavailable

28843  
5c Christmas  
not used



28845  
5c River Road  
offset plates  
unavailable

28846-28847  
5c Savings Bonds  
offset plates  
unavailable

28848  
5c Christmas  
not used



28851  
5c River Road  
offset plates  
unavailable





28852  
5c Christmas  
not used

28853  
5c Washington book  
not finished

28855  
5c Christmas  
not used

28856-28859  
5c River Road  
offset plates  
unavailable

28860-28861  
5c Christmas  
not used

28862  
5c Savings Bonds  
offset plates  
unavailable



28864  
4c Lincoln  
not finished

28865  
5c Savings Bonds  
offset plates  
unavailable

28866-28867  
5c Christmas  
not used



28873-28874  
5c River Road  
offset plates  
unavailable







28881-28882  
5c Christmas  
offset plates  
unavailable



28885  
5c River Road  
not used

28886-28887  
5c Washington  
side coil  
unreported

28888  
5c River Road  
not used



28891-28892  
5c Washington  
side coil  
unreported



28894-28895  
5c Christmas  
offset plates  
unavailable

28896  
5c Washington  
side coil  
rare, not in collection

28909-28897  
5c Washington  
side coil





28898-28899  
5c Christmas  
offset plates  
unavailable

28900  
5c Washington  
side coil  
rare, not in collection

28901  
5c Washington  
side coil  
unreported



28906  
5c Washington  
side coil  
rare, not in collection

28907  
5c Washington  
side coil  
unreported

28908  
5c Christmas  
offset plates  
unavailable

28909  
5c Washington  
side coil  
see plate 28897

28910-28917  
5c Washington  
side coil







28909-28912  
5c Washington  
side coil

28913  
5c Washington  
side coil  
unreported



28916  
5c Washington  
side coil  
unreported

28917  
5c Washington  
side coil  
see plate 28897



28920  
5c Christmas  
offset plates  
unavailable



28922  
5c Flag  
not used

28923  
5c Washington  
side coil  
see plate 28927

28924  
5c Washington  
side coil  
unreported

28925  
5c Flag  
master plates  
not used

28926  
5c Washington  
side coil  
unreported

28927-28923  
5c Washington  
side coil





28928  
5c Washington  
side coil  
unreported

28929  
5c Washington  
side coil  
see plate 28938



28932-28937  
5c Washington  
side coil  
unreported

28938-28929  
5c Washington  
side coil



28939  
5c Washington  
side coil  
unreported



28941  
25c Douglass  
not finished

28942-28943  
5c Washington  
side coil



28944-28945  
5c National Grange  
master plates  
not used



28947  
5c Washington  
side coil  
rare, not in collection



28964-28948  
5c Washington  
side coil



28949  
5c Washington  
side coil  
rare, not in collection

28950  
5c Washington  
side coil  
unreported



28952-28953  
4c Lincoln  
side coil  
unreported

28954



28955



28956



28957



28958



28959  
5c Washington  
side coil  
unreported

28973-28960  
5c Washington  
side coil





28962-28961  
5c Washington  
side coil



28964  
5c Washington  
side coil  
see plate 28948

28965  
5c Washington  
side coil  
unreported

28966-28967  
5c Canada  
master plates  
not used



28970-28971  
5c Mississippi  
master plates  
not used



28973  
5c Washington  
side coil  
see plate 28960

28974  
5c Washington  
side coil  
unreported

28975-28976  
5c Canada  
master plates  
not used

28977  
5c Erie Canal  
master plate  
not used

28978  
8c Alaska Airmail  
master plate  
not used



28981  
5c Canada  
not used





28983  
5c Erie Canal  
not used

28984  
5c Canada  
not used



28986  
5c Canada  
not used



28989  
5c Canada  
not used



28992-28993  
5c Canada  
not used



28996-28997  
5c Canada  
not used

