

## Chapter 54

### Plate Numbers 40000-40999

Plate number 40000 was assigned to a \$2 Kerosene Lamp offset plate in November, 1981 and plate number 40999 was assigned to plate code 1A for the 20c Smokey Bear stamp in May, 1984, and this plate was never released. The new plate number system became firmly entrenched as real plate numbers appeared only on the few remaining stamps issued before 1981. The printing cylinders on the new BEP presses appear capable of printing millions of impressions so the number of these plates required to print a given stamp drops dramatically. The BEP acquired the C press (a 3-color intaglio press) in 1982 with the main use to be booklet and coil production. The D press was acquired in 1984 and is a combination offset-intaglio press that can print with up to six offset plates and one 3-color intaglio plate in a press run.

The Americana series was still in limited use during this period and 15 plates went to press and four of these are unreported. The 7.9c Drum coil had four plates to press with two unreported. The 10c Right to Petition coil had two plates to press and these are unreported. The \$1 Candle Holder was printed from nine intaglio plates and all nine are easy to find. All of the Americana plate numbers are real plate numbers.

The Great Americans series of sheet plates had a few new values introduced during the life of the 40000 section. A characteristic of this series, and the Transportation Coil series, is that new values are introduced only on an as needed basis so almost every year during the life of the series we see new values being introduced. The 1c Dix stamp was originally planned to be printed on the Cottrell presses but was switched to the A press. Only one printing cylinder was used and it exists with two perforation types. Four plates were used to print the 2c Stravinsky stamp and all of these are easy to find. The 3c Clay was printed from two plates, the 4c Schurz stamp was printed from four plates, and the 5c Buck stamp was printed from four plates and all of these are easy. The 10c Russell was printed with one A press cylinder which is very easy to find. Four more plates were used to print the 17c Carson stamp. These had plate code numbers 13-16 and plates 15 and 16 are scarce. Two more 20c Bunche plates went to press with code numbers 11 and 13 and these are scarcer than the earlier numbers. The 20c Gallaudet stamp replaced the 20c Bunche stamp and six plates were used. Plates 8 and 9, the last two, are quite difficult to locate. The 20c Gallaudet was replaced by the 20c Truman stamp which was printed on the A press and the cylinder number is easy to locate. The 30c Laubach and 40c Gilbreth stamps were also printed on the A press with one cylinder required for each stamp.

The Transportation Coil series expanded with some new values. The 1c Omnibus stamp was printed from six plates and all are easy to locate. Two more 2c Locomotive plates went to press and these are also easy to find. The 3c Handcar stamp was issued and printed from four plates with all being easy to locate. The 4c Stagecoach stamp was printed from six plates and plates 3-6 are also known precancelled. The 5c

Motorcycle was also printed from four easy to find plates. The 5.2c Sleigh was printed from six plates and plates 4 and 6 are known only precancelled. The other four are known both mint and precancelled but plates 3 and 5 are scarce and expensive in mint condition. The 5.9c Bicycle stamp was printed from four plates numbered 3-6. Plates 3 and 4 are available both mint and precancelled and 5 and 6 are known only precancelled and are scarce. Five more plates went to press to print the 9.3c Mail Wagon stamp. Plates 3-6 exist mint and 5 and 6 are scarce mint. The scarcest plate is plate 8 and it is known only precancelled. The 10.9c Hansom Cab was printed from four plates and plates 3-4 are known only precancelled and are expensive, but there is a rumor that a large hoard exists and these plates may not be as scarce as they appear. Six more 20c Fire Pumper plates went to press to complete this issue. 20c plate 11 is scarce. For many years, 20c plates 12 and 14 were difficult to find and they were on my want list for years. One day in 1996 I went into a Dallas post office and put money into a vending machine since occasionally I like to play slot machines and it is fun to see what plate number may appear. I was really surprised when the machine began to grind out plates 12 and 14 on the 20c Fire Pumper coil! So after a 15 year wait, I got them at face value and so did my trading partners. The plate number chase never runs out of surprises!

The flags series consisted entirely of the 20c flag stamp in sheet, booklet and coil formats. The sheet numbers are very easy. The 20c flag coils were printed from both the B and C presses and plate 4 is the most difficult followed by plate 6. Plate 14 also exists with a precancel. The difficulty with these plates is only the price since all can be had from a plate number coil dealer if you have the money.

I call definitives which do not fit into a regular issue series 'special definitives'. The 20c Sheep booklet is one of these stamps and 18 more Sheep booklet plates went to press. I collected these plates when the issue was current and had no trouble getting all the numbers but apparently not many people collected the booklet plates at this time since some of these numbers appear to be scarce and expensive today. Plate numbers 20-29 are scarce with plates 28 and 29 being the most difficult. Production of booklet stamps was moved from the Cottrell presses to the B press at the end of the Sheep booklet issue and one cylinder with plate code number 34 was used to print the final runs of the Sheep booklet. The B press run of plate 34 constitutes a separate variety of the Sheep booklet and it is not scarce. A \$9.35 stamp for use on express mail was issued in booklet panes of three stamps and the tab contains four code plate numbers. The D stamp was printed during the 40000 section of plate numbers and the sheet and coil plates are easy to find. There were four plates used to print the booklet stamps. I was only aware of booklet plates 1, 3, and 4 during the time the issue was current. The finder of booklet plate 2 kept quiet and as a result most collectors missed out on this one and it is a very scarce item.

The commemoratives were the most active part of the 40000 section of plates with 659 plates assigned and 448 plates to press. The Consumer Education coil was the first commemorative coil stamp since the Edison coil of 1929. The four plates used are not scarce but they are expensive as strips of five. The 1982 Peace Garden stamp was a combination offset-intaglio issue. None of the plates is particularly scarce but the combination collector has a real challenge with sixteen offset combinations combined

with four intaglio plates for a total of 64 combinations. The offset combination 3632 is the scarcest with approximately 3700 impressions with each of the four intaglio plates. Some of the other offset combinations are almost as scarce and since there were relatively few matched set collectors at this time, completion of all the combinations is a difficult task. The 20c Science and Industry stamp of 1983 is also a difficult item. Apparently, the BEP had problems printing this issue. Intaglio plates 1 through 4 were supposedly destroyed but a very few copies of plates 1 and 3 were found and are rare items. There were 12 offset combinations and 884 is the most difficult. The 20c Balloons stamp of 1983 was printed by the gravure press and combination 22242 is very difficult to find. The 20c Inventors stamp of 1983 was a combination offset intaglio issue with five intaglio plates and ten offset plates being used. The printing with offset plate 11 is a mystery in that only three intaglio plates are known combined with it which is very unusual. What happened to that 4th intaglio plate? The 20c Streetcars stamp with offset combination 3333 is very scarce and worth looking for. The 20c Smokey Bear was the first issue printed on the BEP's new D press and a lot of experimentation was done resulting in some scarce to rare offset combinations. There are some questions about the integrity of the plate code numbers since it appears some of the plate code numbers were used more than once on this issue. This is a problem that still persists with the BEP, most recently with the self stick 32c flag coil where apparently certain plate code numbers were used more than once on different plates.

The air mail stamps provided a rare opportunity to obtain some of the few remaining real plate numbers with the six 40c Mazzei plates. The Olympics air mail set is easy to locate except for combination 3333 on the 28c Olympic stamp which is a bit scarce. Official mail stamps returned for the first time since 1913. The sheet values were printed in a quadrant format with each pane position having a different denomination. The seven sheet values required two sets of plates and the 1c value appeared twice on one set of plates. None of these plates is difficult to find. One plate number (40829) has been found on the 30c Olympic aerogramme of 1983 due to a production miscut. This is obviously a rare or unique item.

The 40000 section is one of the more interesting and challenging sections with the commemoratives providing the biggest difficulty. This is quite a change from the days when the coils and booklets were the stumbling blocks. The 40000 section has 628 plates available to collectors with four unreported. A high completion percentage is possible and 95% should be obtained without tremendous difficulty. The 41000 section is next and it marks the end of the BEP's postage stamp plate number series.

## Chapter 54-40000

		40000 Series Totals						
Series	Subject	Plate	Assigned	To	Available	Available	Unreported	I Have
		Type		Press	Real P#	Code P#		
	(totals)		1000	688	23	605	4	
8th Bureau Series (Americana)								
1975	7.9c Drum coil	432R	6	4	4		2	
1975	10c Right to Petition coil	432R	2	2	2		2	
1975	50c Iron Lamp offset	400L	16	15	0			
1975	\$1 Candle Holder	400R	9	9	9		0	
1975	\$1 Candle Holder offset	400L	19	17	0			
1975	\$2 Kerosene Lamp offset	400L	5	5	0			
Great Americans								
1980	1c Dorthea Dix	400R	5	0		0		
1980	1c Dorthea Dix	920S	1	1		1	0	
1980	2c Igor Stravinsky	400R	4	4		4	0	
1980	3c Henry Clay	400R	9	2		2	0	
1980	4c Carl Schurz	400R	6	4		4	0	
1980	5c Pearl Buck	400R	4	4		4	0	
1980	10c Richard Russell	920S	1	1		1	0	
1980	13c Crazy Horse	400R	2	0		0		
1980	17c Rachel Carson	400R	13	4		4	0	
1980	20c Ralph Bunche	400R	6	2		2	0	
1980	20c Thomas Gallaudet	400R	11	6		6	0	
1980	20c Harry Truman	920S	1	1		1	0	
1980	30c Frank Lauback	920S	1	1		1	0	
1980	40c Lillian Gilbreth	920S	1	1		1	0	
Transportation Coils								
1981	1c Omnibus	432R	8	6		6	0	
1981	2c Locomotive	432R	4	2		2	0	
1981	3c Handcar	432R	6	4		4	0	
1981	4c Stagecoach	432R	8	6		6	0	
1981	5c Motorcycle	432R	6	4		4	0	
1981	5.2c Sleigh	432R	8	6		6	0	
1981	5.9c Bicycle	432R	8	4		4	0	
1981	7.4c Baby Buggy	936S	2	1		1	0	
1981	9.3c Mail Wagon	432R	6	5		5	0	
1981	10.9c Hansom Cab	432R	4	4		4	0	
1981	11c Railroad Caboose	936S	1	1		1	0	
1981	20c Fire Pumper	432R	9	6		6	0	
Flags Series								
1981	20c Flag	920S	2	2		2	0	
1981	20c Flag coil	936S	13	12		12	0	
1981	20c Flag book (10)	780S,960S	4	4		4	0	
Special Definitives								
1981	20c Sheep book	480R	23	17		17	0	
1981	20c Sheep book	1040S	2	1		1	0	



## Chapter 54-40000

1983	\$9.35 Express Mail book	78C	4	4		4	0
1981	'D'	460C	4	4		4	0
1981	'D' coil	432R	2	0		0	
1981	'D' coil	468C	2	0		0	
1981	'D' coil	760C	2	2		2	0
1981	'D' book	480R	4	0		0	
1981	'D' book	760C	2	0		0	
1981	'D' book	1040+C73	4	4		4	0
Commemoratives							
1981	20c Touro Synagogue	460S	1	1		1	0
1982	20c Roosevelt	192R	9	4		4	0
1982	20c Library of Congress	200R	11	4		4	0
1982	20c Alger	200R	9	4		4	0
1982	20c Love	200C	10	10		10	0
1982	20c Washington	200C	6	6		6	0
1982	20c Netherlands	230C	3	3		3	0
1982	20c Robinson	200C	5	5		5	0
1982	20c Consumer Education coil	432R	4	4		4	0
1982	20c Aging	200R	16	4		4	0
1982	20c Birds & Flowers	200C	10	10		10	0
1982	20c Peace Garden	200R,L	29	23	1	23	0
1982	20c Barrymores	200C	6	6		6	0
1982	20c World's Fair	200C	6	6		6	0
1982	20c Walker	200C	6	6		6	0
1982	20c Libraries	200R	8	5		5	0
1982	20c Architecture	160R	10	6		6	0
1982	20c Wolf Trap Farm	200C	5	5		5	0
1982	20c Tiepolo Christmas	230C	29	26		26	0
1982	(ND) Tiepolo Christmas	230C	2	0		0	
1982	20c Snow Scenes	200C	10	9		9	0
1982	20c Ponce de Leon	230C	10	10		10	0
1982	13c Kitten & Puppy	200C	8	8		8	0
1983	20c Brooklyn Bridge	200R	8	4		4	0
1983	20c Concord	200R	17	4		4	0
1983	20c Opera	200R,L	12	6		6	0
1983	20c Science & Industry	200R,L	43	19		19	0
1983	20c Balloons	160C	13	12		12	0
1983	20c Sweden	200R	13	6		6	0
1983	20c Volunteerism	460S	3	1		1	0
1983	20c CCC	200C	6	6		6	0
1983	20c Inventors	200R,L	20	15		15	0
1983	20c Joplin	200C	8	6		6	0
1983	20c TVA	230C	6	6		6	0
1983	20c Medal of Honor	160R,L	22	14		14	0
1983	20c Physical Fitness	230C	4	4		4	0
1983	20c Hawthorne	200C	4	4		4	0
1983	20c Babe Ruth	200R	5	4		4	0
1983	20c Civil Service	230C	2	2		2	0
1983	20c Streetcars	200R,L	21	16		16	0
1983	20c Treaty of Paris	160C	4	4		4	0
1983	13c Olympics	200C	4	4		4	0

## Chapter 54-40000

1983	20c Winter Olympics	200C	5	4		4	0
1983	20c Summer Olympics	200C	7	7		7	0
1983	20c Raphael Christmas	200C	11	11		11	0
1983	20c Santa Claus	230C	11	10		10	0
1984	20c Thorpe	200R	29	17		17	0
1984	20c Love	200C	19	13		13	0
1984	20c Melville	200R	25	4		4	0
1984	20c FDIC, Arch., etc.	200C	13	8		8	0
1984	20c Fairbanks	230C	6	6		6	0
1984	20c Smokey the Bear	200R,L	37	28		28	0
1984	20c Orchids	192C	13	7		7	0
1984	20c Migratory Bird	200R	28	8		8	0
1984	20c Louisiana Expo	160C	5	5		5	0
1984	20c Clemente	200C	7	6		6	0
1984	20c McCormack	200C	5	5		5	0
1984	20c E. Roosevelt	192R	1	0		0	
1984	20c American Dogs	160C	4	4		4	0
1984	20c Horace Moses	460S	1	1		1	0
1984	20c Vietnam Vets	160R	1	0		0	
1984	20c Family Unity	230C	3	2		2	0
Special Purpose Issues							
1980	40c Mazzei Air Mail	200C	12	6	6		0
1983	28c Olympic Air Mail	200C	9	8		8	0
1983	35c Olympic Air Mail	200C	4	4		4	0
1983	40c Olympic Air Mail	200C	8	4		4	0
1983	20c Official Mail coil	936S	1	1		1	0
1983	1c, 1c, 17c, 4c Official Mail	400R	8	5		5	0
1983	\$1, 13c, \$5, Dc Official Mail	400R	7	4		4	0
1983	'D' Official Mail coil	936S	1	1		1	0
1983	30c World Comm. Aerogramme	8C	16	12	0		
1983	30c Olympic Aerogramme	8C	15	13	1		0

40000  
\$2 Lamp  
offset plates  
unavailable

40001-40002  
20c Roosevelt  
plates 1 2



40003-40005  
\$2 Lamp  
offset plates  
unavailable

40006-40007  
20c Roosevelt  
plates 3 4



40008  
20c Alger  
master plate  
not used

40009-40010  
20c Roosevelt  
plates 5 6  
not used

40011-40012  
7.9c Drum  
side coil  
rare, not in collection

40013  
20c Roosevelt  
plate 7  
not used

40014-40015  
9.3c Mail Wagon coil  
plates 3 4





40016-40017  
20c Roosevelt  
plates 8 9  
not used

40018-40019  
50c Lamp  
offset plates  
unavailable

40020-40022  
\$1 Lamp  
offset plates  
unavailable

40023-40027  
20c Love  
plates 11111



Scott Catalog #  
<<1951  
1951A>>



40028  
20c Flag coil  
plate 2



40029-40030  
20c Fire Pumper coil  
plates 11 12



40031  
20c Bunche  
plate 11



40032  
20c Bunche  
plate 12  
not finished

40033-40034  
5.9c Bicycle coil  
plates 1 2  
not used

40035-40036  
5.9c Bicycle coil  
plates 3 4





40037  
20c Touro Synagogue  
plate 1



40038-40043  
20c Washington  
plates 111111



40044-40047  
20c Alger  
plates 1 2 3 4



40048  
20c Bunche  
plate 13



40049  
20c Bunche  
plate 14  
not finished

40050-40051  
20c Fire Pumper coil  
plates 13 14





40052-40055  
20c Alger  
plates 5 6 7 8  
not finished

40056  
20c Flag  
plate 3



40057-40058  
9.3c Mail Wagon coil  
plates 5 6



40059  
20c Library of Congress  
master plate  
not used

40060-40061  
3c Handcar coil  
plates 1 2



40062-40063  
10.9c Hansom Cab coil  
plates 1 2





40064  
20c Flag coil  
plate 3



40065-40067  
20c Netherlands  
plates 111



40068-40069  
10.9c Hansom Cab coil  
plates 3 4



40070-40074  
20c Robinson  
plates 11111



40075-40076  
5.9c Bicycle coil  
plates 5 6



40077  
\$1 Lamp  
offset plates  
unavailable

40078  
20c Sheep book  
plate 11





40079-40082  
20c Consumer Ed. Coil  
plates 1 2 3 4



40083-40084  
5.9c Bicycle coil  
plates 7 8  
not finished

40085  
20c Aging  
master plate  
not used

40086-40095  
20c Birds and Flowers  
plates 11111 22222







40096-40097  
(22c) D coil  
plates 5 6  
not used

40098-40100  
(22c) D  
plates 1 2 3



40101  
20c Library of Congress  
master plate  
not used

40102-40106  
20c Aging  
plate 1 2 3 4 5  
not finished

40107  
(22c) D book  
plate 1



40108  
20c Sheep book  
plate 12



40109  
20c Sheep book  
plate 13  
not finished



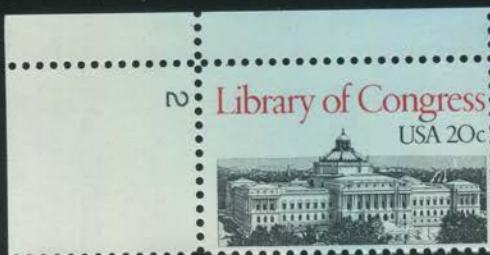
40110  
20c Aging  
plate 6  
not finished

40111  
20c Library of Congress  
plate 1



40112  
20c Aging  
master plate  
not used

40113-40114  
20c Library of Congress  
plates 2 3



40115-40116  
50c Lamp  
offset plates  
unavailable

40117-40122  
20c Barrymores  
plates 111111



40123  
20c Aging  
plate 1



40124  
20c Library of Congress  
plate 4



40125  
20c Aging  
plate 2



40126  
(22c) D  
plate 4



40127-40129  
(22c) D book  
plates 2 3 4  
not finished

40130  
(22c) D book  
plate 5  
not finished

40131  
20c Library of Congress  
plate 5  
not finished

40132  
20c Aging  
plate 3



40133  
20c Library of Congress  
plate 6  
not finished

40134  
20c Aging  
plate 4





40135  
20c Library of Congress  
plate 7  
not finished

40136  
20c Aging  
plate 5  
not used

40137  
20c Library of Congress  
plate 8  
not finished

40138-40139  
20c Aging  
plates 6 7  
not finished

40140  
20c Library of Congress  
plate 9  
not finished

40141-40142  
50c Lamp  
offset plates  
unavailable

40143  
17c Carson  
master plate  
not used

40144  
20c Aging  
plate 8  
not finished

40145-40146  
20c Fire Pumper coil  
plates 15 16



40147-40148  
50c Lamp  
offset plates  
unavailable

40149  
20c Peace Garden  
master plate  
not used

40150-40155  
20c World's Fair  
plates 111111







40156-40161  
20c Walker  
plates 111111



40162  
20c Fire Pumper coil  
plate 17  
not finished

40163-40164  
20c Libraries  
plates 1 2



40165  
20c Flag coil  
plate 4



40166  
20c Libraries  
plate 3



40167-40168  
7.9c Drum  
side coil  
unreported

40169-40170  
3c Handcar  
plates 3 4





40171-40172  
20c Libraries  
plates 4 5



40173-40175  
20c Libraries  
plates 6 7 8  
not used

40176-40177  
20c Peace Garden  
plates 1 2



40178  
20c Flag book (10)  
plate 1



40179  
20c Peace Garden  
plate 3



40180-40183  
20c Peace Garden  
offset plates 1111





40184  
20c Peace Garden  
plate 4



40185-40188  
20c Peace Garden  
plates 5 6 7 8  
not used

40189-40192  
20c Peace Garden  
offset plates 2222



40193  
20c Architecture  
master plate  
not used

40194  
20c Flag coil  
plate 5



40195-40196  
20c Peace Garden  
offset plates 33  
red green



40197-40198  
20c Sheep book  
plates 14 15







40199  
20c Peace Garden  
offset plate 3  
yellow



40200-40201  
20c Peace Garden  
offset plates 44  
red green



40202  
20c Peace Garden  
offset plate 3  
black



40203-40205  
20c Peace Garden  
offset plates 5 6 7  
red



40206  
20c Flag coil  
plate 6





40207  
2c Locomotive coil  
plate 7  
not finished

40208  
2c Locomotive coil  
plate 8



40209  
20c Peace Garden  
offset plate 4  
yellow, not finished

40210  
20c Peace Garden  
offset plate 8  
red



40211  
20c Peace Garden  
offset plate 4  
black



40212-40215  
4c Stagecoach coil  
plates 1 2 3 4





40216-40217  
(22c) D coil  
plates 1 2



40218-40219  
(22c) D book  
plates 1 2  
not used

40220-40221  
9.3c Mail Wagon coil  
plate 7  
not used  
plate 8

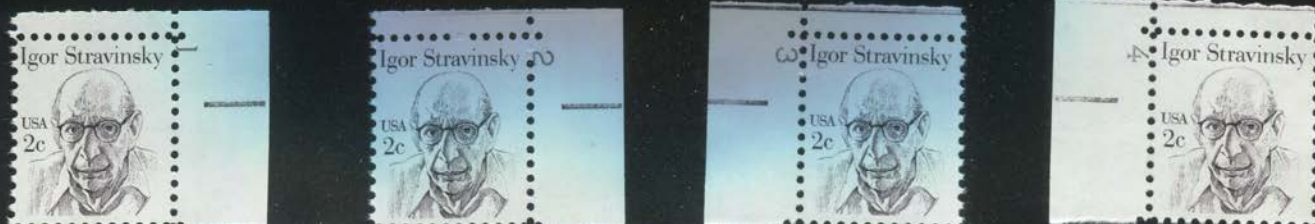


40222-40223  
10c Petition coil  
unreported

40224  
20c Architecture  
plate 1



40225-40228  
2c Stravinsky  
plates 1 2 3 4





40229-40231  
20c Architecture  
plates 2 3 4

2



Frank Lloyd Wright 1867-1959 Fallingwater Mill Run PA

Architecture USA 20c

2



Mies van der Rohe 1886-1969 Illinois Inst Tech Chicago

Architecture USA 20c

2



Walter Gropius 1883-1969 Gropius House Lincoln MA

Architecture USA 20c

2



Eero Saarinen 1910-1961 Dulles Airport Washington DC

Architecture USA 20c

3



Frank Lloyd Wright 1867-1959 Fallingwater Mill Run PA

Architecture USA 20c

3



Mies van der Rohe 1886-1969 Illinois Inst Tech Chicago

Architecture USA 20c

3



Walter Gropius 1883-1969 Gropius House Lincoln MA

Architecture USA 20c

3



Eero Saarinen 1910-1961 Dulles Airport Washington DC

Architecture USA 20c

4



Frank Lloyd Wright 1867-1959 Fallingwater Mill Run PA

Architecture USA 20c

4



Mies van der Rohe 1886-1969 Illinois Inst Tech Chicago

Architecture USA 20c





Walter Gropius 1883-1969 Gropius House Lincoln MA

Architecture USA 20c



Eero Saarinen 1910-1961 Dallas Airport Washington DC

Architecture USA 20c

40232-40233  
20c Sheep book  
plates 16 17



40234-40235  
20c Fire pumper coil  
plates 18 19  
not finished

40236-40237  
20c Architecture  
plates 5 6



Frank Lloyd Wright 1867-1959 Fallingwater Mill Run PA

Architecture USA 20c



Mies van der Rohe 1896-1969 Illinois Inst Tech Chicago

Architecture USA 20c



Walter Gropius 1883-1969 Gropius House Lincoln MA

Architecture USA 20c



Eero Saarinen 1910-1961 Dallas Airport Washington DC

Architecture USA 20c





40238  
20c Architecture  
plate 7  
not used

40239  
17c Carson  
plate 5  
not finished

40240  
20c Architecture  
plate 8  
not used

40241  
17c Carson  
plate 6  
not finished

40242  
20c Architecture  
plate 9  
not used

40243  
17c Carson  
plate 7  
not finished

40244-40248  
20c Wolf Trap  
plates 11111



40249-40253  
20c Xmas Religious  
plates 1111x  
x-not used



40254-40258  
20c Xmas Religious  
plates 2222x  
x-not used





40259-40260  
17c Carson  
plates 8 9  
not used

40261-40262  
4c Stagecoach coil  
plates 5 6



40263  
17c Carson  
plate 10  
not finished

40264-40265  
(22c) D coil  
plates 1 2  
not finished

40266  
17c Carson  
plate 11  
not finished

40267  
20c Flag coil  
plate 7  
not finished

40268  
17c Carson  
plate 12  
not finished

40269-40276  
20c Xmas Snow  
plates 1111 2222







40277-40278  
7.9c Drum coil  
not used

40279  
(22c) D book  
plate 2



40280-40281  
4c Stagecoach coil  
plates 7 8  
not used

40282-40286  
20c Ponce de Leon  
plates 11111



40287  
(22c) D book  
plate 3





40288-40290  
\$1 Lamp  
offset plates  
unavailable

40291-40292  
20c Sheep book  
plates 18 19



40293-40294  
20c Xmas Religious  
plates 1 2



40295-40296  
??c Xmas Religious  
plates 1 2  
not finished

40297-40299  
\$1 Lamp  
offset plates  
unavailable

40300-40303  
50c Lamp  
offset plates  
unavailable

40304  
(22c) D book  
plate 4



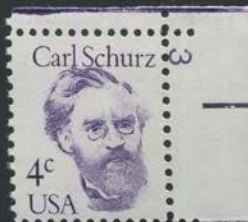
UNITED STATES POSTAL SERVICE 1981



40305-40309  
20c Ponce de Leon  
plates 22222



40315-40318  
4c Schurz  
plates 1 2 3 4



40319  
20c Brooklyn Bridge  
master plate  
not used

40320-40327  
13c Kitten Puppy  
plates 1111 2222



40328  
20c Xmas Snow  
plate 3





40329-40330  
20c Xmas Religious  
plates 3 4  
magenta



40331-40332  
20c Xmas Religious  
plates 3 4  
black



40333  
20c Xmas Religious  
plate 3  
red



40334  
\$2 Lamp  
offset plates  
unavailable



40335  
20c Xmas Religious  
plate 3  
yellow



40336  
20c Xmas Religious  
plate 5  
magenta



40337  
20c Xmas Religious  
plate 3  
cyan



40338  
20c Xmas Religious  
plate 5  
black



40339  
20c Xmas Religious  
plate 4  
red



40340  
20c Concord  
master plate  
not used

40341  
20c Xmas Religious  
plate 5  
red



40342  
20c Xmas Snow  
plate 4  
not used

40343  
20c Xmas Religious  
plate 4  
yellow





40344  
20c Xmas Religious  
plate 6  
magenta



40345  
20c Xmas Religious  
plate 4  
cyan



40346  
20c Xmas Religious  
plate 6  
black



40347  
20c Opera  
master plate  
not used

40348-40349  
20c Gallaudet  
plates 1 2



40350-40351  
20c Gallaudet  
plates 3 4  
not used

40352  
20c Brooklyn Bridge  
plate 1



40353  
20c Brooklyn Bridge  
plate 2  
not finished

40354  
20c Xmas Religious  
plate 6  
red





40355  
20c Brooklyn Bridge  
plate 3  
not used

40356-40358  
20c Brooklyn Bridge  
plates 4 5 6



40359  
20c Xmas Religious  
plate 7  
black, not used

40360  
20c Brooklyn Bridge  
plate 7  
not used

40361  
20c Official Mail  
plate 1  
not used

40362  
20c Science & Industry  
master plate  
not used

40363  
(low) official Mail  
master plate  
not used

40364  
20c Flag coil  
plate 8



40365  
(high) official Mail  
master plate  
not used

40366-40373  
30c Aerogramme  
unavailable

40374  
(22c) D Official Mail  
plate 1  
not used

40375  
20c Sweden  
master plate  
not used

40376  
20c Volunteerism  
plate 1  
not used



40377-40386  
20c Balloons  
plates 11111 22222



40387  
20c Science & Industry  
plate 1  
rare, not in collection

40388-40390  
20c Science & Industry  
offset plates 111  
not used

40391  
20c Science & Industry  
plate 2  
not used

40392-40393  
20c Gallaudet  
plates 5 6





40394  
20c Science & Industry  
plate 3  
rare, not in collection

40395  
20c Science & Industry  
plate 4  
not used

40396  
20c Science & Industry  
plate 5



40397-40399  
20c Science & Industry  
offset plates 222  
not used

40400-40401  
20c Science & Industry  
plates 6 7



40402-40403  
20c Sheep book  
plates 20 21







40404-40406  
20c Science & Industry  
offset plates 333  
not used

40407  
20c Flag coil  
plate 9



40408  
(low) official Mail  
plate 1  
not used

40409-40412  
(low) official Mail  
plates 2 3 4 5







40413-40414  
(high) official Mail  
plates 1 2







40415  
(low) Official Mail  
plate 6





40416  
(low) Official Mail  
plate 7  
not used

40417-40418  
(high) official Mail  
plates 3 4



40419-40421  
20c Science & Industry  
offset plates xx4  
x-not used





40422-40423  
(high) official Mail  
plates 5 6  
not used

40424-40425  
20c Sheep book  
plates 22 23



40426-40433  
30c Aerogramme  
unavailable

40434-40435  
20c Balloons  
plates 3 4







40436-40438  
20c Science & Industry  
offset plates x55  
x-not used



40439-40441  
20c Science & Industry  
offset plates 6x6  
x-not used



40442  
20c Concord  
plate ?  
not used

40443-40445  
20c Science & Industry  
offset plates 1 2 3  
black, not used

40446-40447  
20c Sheep book  
plates 24 25







40448-40449  
20c Concord  
plate ?  
not used

40450-40451  
20c Bunche  
plates 15 16  
not used

40452-40454  
20c Concord  
plate ?  
not used

40455-40457  
20c Science & Industry  
offset plates 777



40458-40460  
20c Science & Industry  
offset plates 888



40461-40463  
20c Science & Industry  
offset plates x99  
x-not used



40464-40465  
20c Opera  
plates 1 2



40466  
20c Science & Industry  
plate 8





40467  
20c Science & Industry  
plate 9  
not used

40468  
20c Opera  
plate 3



40469  
20c Sweden  
plate 1



40470  
20c Opera  
plate 4



40471-40472  
20c Sweden  
plates 2 3



40473  
20c Volunteerism  
plate 2  
not used

40474  
20c Opera  
plate 5  
not used

40475  
20c Sweden  
plate 4



40476  
20c Opera  
offset plate 1





40477  
20c Flag  
plate 4



40478  
20c Sweden  
plate 5  
not finished

40479  
20c Opera  
plate 6  
not used

40480  
20c Sweden  
plate 6  
not finished

40481  
20c Opera  
plate 7  
not used

40482-40483  
20c Sweden  
plates 7 8  
not finished

40484  
20c Sweden  
plate 9



40485-40487  
20c Science & Industry  
offset plates 111  
not used

40488  
20c Sweden  
plate 10



40489-40490  
20c Sweden  
plates 11 12  
not used

40491  
20c Sheep book  
plate 26



40492  
20c Sheep book  
plate 27  
not finished

40493-40498  
40c Mazzei Airmail  
not finished

40499-40503  
20c Love  
plates 22222



40504-40505  
20c Sheep book  
plates 28 29





40506  
20c Opera  
offset plate 2



40507-40508  
20c Opera  
offset plates 3 4  
not used

40509  
20c Volunteerism  
plate 3



40510-40513  
5c Motorcycle coil  
plates 1 2 3 4







40514-40517  
5.2c Sleigh  
plates 1 2 3 4



40524-40525  
20c Sheep book  
plates 30 31  
not finished

40526-40531  
20c CCC  
plates 111111





40532-40533  
5.2c Sleigh  
plates 5 6



40534-40537  
1c Omnibus coil  
plates 1 2 3 4



40538-40541  
50c Lamp  
offset plates  
unavailable

40542  
20c Concord  
master plate  
not used

40543  
20c Inventors  
master plate  
not used

40544-40547  
1c Dix  
plates 1 2 3 4  
not used

40548-40553  
20c Joplin  
plates 111111





40554-40557  
20c TVA  
plates 1111

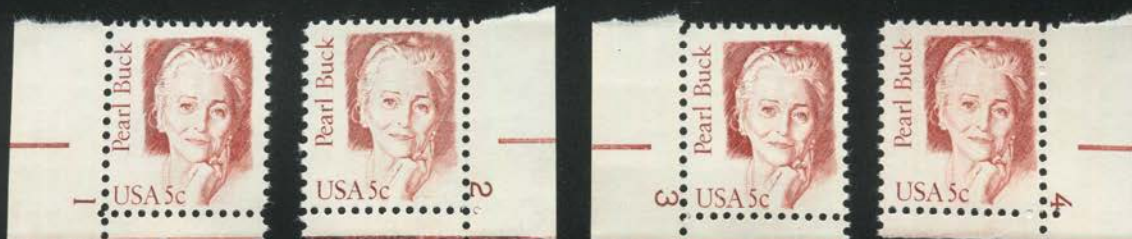


40558-40559  
1c Omnibus coil  
plates 5 6



40560  
20c Medal of Honor  
master plate  
not used

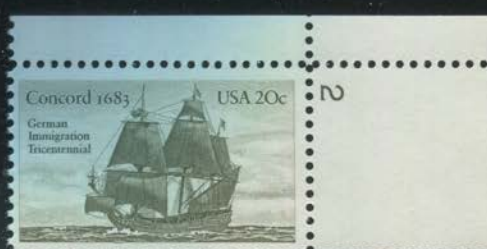
40561-40564  
5c Pearl Buck  
plates 1 2 3 4



40565  
20c TVA  
plate 1



40566-40568  
20c Concord  
plates 1 2 3







40569-40572  
28c Olympic Airmail  
plates 2222



40573-40576  
40c Olympic Airmail  
plates 2222



40577  
20c Concord  
plate 4





40578-40579  
20c Concord  
plates 5 6  
not used

40580-40581  
20c Sheep book  
plates 32 33  
not finished

40582-40583  
20c Concord  
plates 7 8  
not used

40584-40587  
20c Physical Fitness  
plates 1111



40588  
20c Concord  
plate 9  
not used

40589-40592  
40c Olympic Airmail  
plates 3333



40593  
20c Medal of Honor  
plate 1





40594  
20c Sheep book  
plate 34



40595-40598  
20c Hawthorne  
plates 1111



40599-40600  
20c Medal of Honor  
plates 2 3



40601  
20c Medal of Honor  
plate 4  
not used

40602  
20c Medal of Honor  
plate 5



40603  
20c Medal of Honor  
plate 6  
not used

40604  
20c TVA  
plate 2



40605-40607  
20c Medal of Honor  
plates 7 8 9  
not used



40608  
20c Gallaudet  
plate 7  
not used

40609-40612  
20c Medal of Honor  
offset plates 1111



40613-40614  
4c Schurz  
plates 5 6  
not used

40615  
20c Babe Ruth  
plate 1  
not used

40616-40618  
20c Babe Ruth  
plates 2 3 4



40619-40620  
20c Inventors  
offset plates 1 2  
orange, not used

40621-40622  
20c Inventors  
plates 1 2



40623  
20c Inventors  
plate 3  
not used



40624-40627  
20c Medal of Honor  
offset plates 2222



40628-40629  
20c Inventors  
plates 4 5



40630-40631  
20c Gallaudet  
plates 8 9



40632  
20c Inventors  
plate 6





40633-40636  
20c Medal of Honor  
offset plates 3xx3  
x-not used



40637-40638  
3c Henry Clay  
plates 1 2



40639-40640  
3c Henry Clay  
plates 3 4  
not used

40641  
20c Civil Service  
plate 1



40642  
20c Balloons  
plate 5  
not used

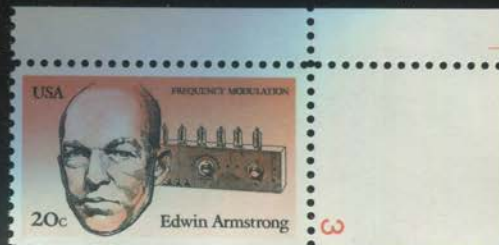
40643-40644  
13c Crazy Horse  
plates 5 6  
not used

40645  
20c Civil Service  
plate 1  
gravure

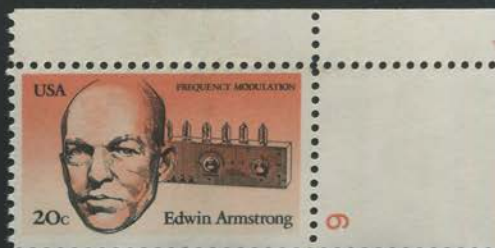
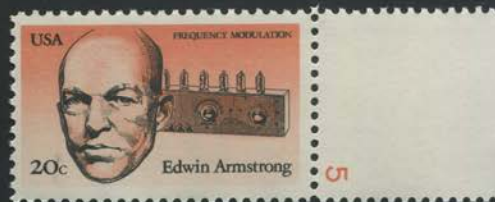


40646  
20c Streetcars  
master plate  
not used

40647-40650  
20c Inventors  
offset plates 3 4 5 6







40651-40654  
20c Treaty of Paris  
plates 1111



40655-40658  
13c Olympics  
plates 1111







40659-40668  
20c Xmas Religious  
plates 11111 22222



40669  
20c Babe Ruth  
plate 5



40670-40673  
20c Inventors  
offset plates 7 8 9 10







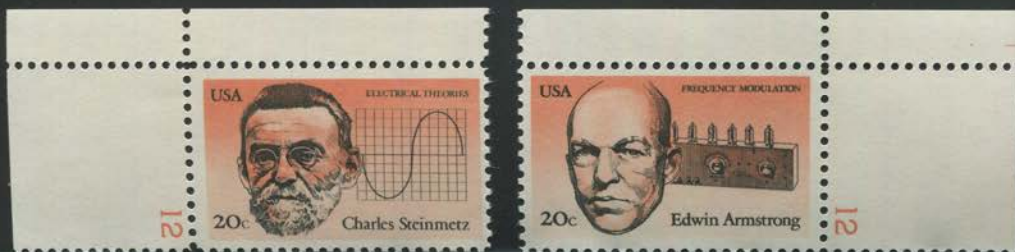
40674-40677  
\$9.35 Express book  
plates 1111



40678-40679  
20c Inventors  
offset plates 11 12







40680  
20c Flag book (10)  
plate 2



40681-40684  
3c Henry Clay  
plates 5 6 7 8  
not finished

40685-40686  
20c Gallaudet  
plates 10 11  
not finished

40687-40689  
20c Streetcars  
plates 1 2 3





40690  
20c Scott Joplin  
plate 2  
not used

40691  
20c Streetcars  
plate 4



40692-40695  
20c Streetcars  
plates 5 6 7 8  
not used

40696-40699  
20c Streetcars  
offset plates 1111





40700-40702  
\$1 Lamp  
offset plates  
unavailable

40703  
3c Henry Clay  
plate 9  
not used

40704  
20c Sheep book  
plate 35  
unreported

40705-40707  
\$1 Lamp  
offset plates  
unavailable

40708  
1c Dix  
plate 5  
not used



40711-40720  
20c Santa Claus  
plates 11x11 22222  
x-not used



40721-40722  
1c Omnibus coil  
plates 7 8  
not used

40723  
2c Locomotive coil  
plate 9  
not finished

40724-40731  
20c Streetcars  
offset plates 2222 3333







40732  
1c Dix  
plate 1



40733  
20c Scott Joplin  
plate 2  
not used

40734  
2c Locomotive coil  
plate 10



40735-40738  
28c Olympic Airmail  
plates 3333  
not used

40739  
20c Santa Claus  
plate 3





40740-40741  
3c Handcar coil  
plates 5 6  
not used

40742-40749  
30c Aerogramme  
unavailable

40750-40753  
35c Olympic Airmail  
plates 1111



40754  
20c Inventors  
offset plate 13  
not used

40755  
20c Jim Thorpe  
master plate  
not used

40756-40761  
20c Love  
plates 111111  
not used

40762-40766  
20c Love  
plates 11111





40767-40768  
20c Jim Thorpe  
plates 1 2  
not used

40769-40770  
20c Jim Thorpe  
plates 3 4



40771-40774  
20c Winter Olympics  
plates 1111



40775  
20c Melville  
master plate  
not used

40776-40777  
20c Jim Thorpe  
plates 5 6  
not used

40778  
28c Olympic Airmail  
plate 4  
not used

40779-40784  
20c FDIC, etc.  
plates 1xxxx1  
x-not used







40785-40786  
17c Carson  
plates 13 14



40787  
20c Xmas Religious  
plate 3



40788  
20c Love  
plate 1



40789  
20c Jim Thorpe  
plate 7



40790  
20c Jim Thorpe  
plate 8  
not used

40791  
20c Winter Olympics  
plate 2  
not used

40792-40793  
20c Jim Thorpe  
plates 9 10







40794  
11c Caboose coil  
plate 1



40795-40800  
20c FDIC, etc.  
plates 222222



40801-40804  
20c Jim Thorpe  
plates 11 12 13 14





40805  
20c Truman  
plate 1



40806  
20c Flag book (10)  
plate 3



40807-40810  
20c Fairbanks  
plates 1111



40811  
40c Gilbreth  
plate 1



40812-40815  
20c Melville  
plates 1 2 3 4  
not used

40816  
20c Flag coil  
plate 10



40817-40818  
20c Melville  
plates 5 6  
not used

40819-40820  
5c Motorcycle coil  
plates 5 6  
not used

40821-40822  
20c Melville  
plates 7 8  
not used

40823-40827  
20c Love  
plates 22222





40828  
20c Jim Thorpe  
master plate  
not used

40829  
30c Olympic Aero  
rare miscut  
see large sheet album

40829-40832  
30c Aerogramme  
unavailable

40833  
20c FDIC, etc.  
plate 3  
not used

40834  
20c Smokey the Bear  
plate 1  
not used

40835  
20c Love  
plate 2



40836-40840  
20c Orchids  
plates 11111



40841-40844  
20c Summer Olympics  
plates 1111







40845-40848  
20c Smokey the Bear  
offset plates 1111  
not used

40849  
20c Flag coil  
plate 11



40850-40851  
20c Jim Thorpe  
plates 15 16  
not finished

40852-40854  
20c Jim Thorpe  
plates 17 18 19



40855  
20c Fairbanks  
plate 1



40856  
20c Jim Thorpe  
plate 20



40857  
20c Jim Thorpe  
plate 21  
not used

40858  
20c Migratory Bird  
master plate  
not used



40859  
20c Jim Thorpe  
plate 22



40860  
20c Orchids  
plate 2  
black



40861  
20c Jim Thorpe  
plate 23  
not used

40862  
7.4c Baby Buggy coil  
plate 1  
not used

40863  
20c Orchids  
plate 3  
black, not used

40864  
20c Jim Thorpe  
plate 24  
not used

40865-40866  
20c Orchids  
plates 11  
not used

40867  
20c Jim Thorpe  
plate 25



40868-40869  
20c Orchids  
plates 22  
black, not used



40870-40871  
20c Jim Thorpe  
plates 26 27



40872  
20c Orchids  
plate 2  
green, not used

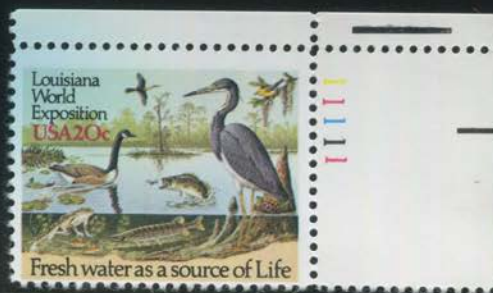
40873-40876  
20c Smokey the Bear  
offset plates 2222  
not used

40877  
20c Orchids  
plate 3  
green, not used

40878  
20c Flag coil  
plate 12



40879-40883  
20c Louisiana Expo  
plates 11111



40884-40886  
20c Migratory Bird  
plates 1 2 3  
not used

40887  
20c Flag coil  
plate 13



40888-40890  
20c Migratory Bird  
plates 4 5 6  
not used

40891  
20c Summer Olympics  
plate 2







40892-40895  
20c Migratory Bird  
plates 7 8 9 10  
not used

40896  
20c Smokey the Bear  
plate 2  
not used

40897-40900  
20c Migratory Bird  
plates 11 12 13 14  
not used

40901  
7.4c Baby Buggy coil  
plate 2



40902-40903  
20c Migratory Bird  
plates 15 16  
not used

40904  
20c Smokey the Bear  
plate 3



40905-40908  
20c Melville  
plates 9 10 11 12  
not used

40909  
20c Flag book (10)  
plate 4



40910-40911  
5.2c Sleigh coil  
plates 7 8  
not used

40912  
20c Melville  
plate 13  
not used

40913  
20c Migratory Bird  
plate 17  
not used

40914-40919  
20c Smokey the Bear  
offset plates 33 4444  
not used

40920-40925  
20c Clemente  
plates 111111





40926-40930  
20c McCormack  
plates 11111



40931  
20c Summer Olympics  
plate 3



40932  
20c E. Roosevelt  
master plate  
not used

40933  
30c Aerogramme  
unavailable

40934  
20c Summer Olympics  
plate 4







40935  
10c Russell  
plate 1



40936-40937  
20c Migratory Bird  
plates 18 19



40938  
20c Summer Olympics  
plate 2  
black, not used

40939-40943  
20c Migratory Bird  
plates 20 21 22 23 24







40944  
20c Flag coil  
plate 14



40945-40946  
17c Carson  
plates 15 16



40947  
20c Migratory Bird  
plate 25



40948  
20c Migratory Bird  
plate 26  
not used

40949  
20c Melville  
plate 14



40950  
20c Migratory Bird  
plate 27  
not used

40951-40954  
20c Smokey the Bear  
offset plates 5x5x  
x-not used



40955-40956  
20c Melville  
plates 15 16







40957  
20c Fairbanks  
plate 2



40958  
20c Melville  
plate 17



40959-40962  
20c Smokey the Bear  
offset plates 6666



40963-40967  
20c Melville  
plates 18 19 20 21 22  
not used

40968  
30c Aerogramme  
unavailable

40969  
20c Melville  
plate 23  
not used



40972-40974  
\$1 Lamp  
offset plates  
unavailable

40975  
20c Smokey the Bear  
offset plate 7





40976  
20c Love  
Plate 3



40977-40980  
20c Dogs  
plates 1111



40981  
20c Melville  
master plate  
not used

40982  
20c Horace Moses  
plate 1



40983-40986  
20c Smokey the Bear  
offset plates 8888



40987  
20c Clemente  
plate 2  
not used



40988-40991  
20c Smokey the Bear  
offset plates 9999



40992  
20c Vietnam Vets  
master plate  
not used

40993  
20c Family Unity  
plate 1  
not used

40994-40995  
20c Family Unity  
plates 11



40996  
30c Laubach  
plate 1



40997-41000  
20c Smokey the Bear  
offset plates 1111

