

## Chapter 2

### Plate Numbers 1-999

The first 999 plate numbers assigned by the Bureau of Engraving and Printing (BEP) were very popular with collectors. Most US dealers seem to have some examples of these plate numbers in their stocks. Just compare the availability of these plate numbers with earlier plate numbers such as those on the Columbian commemoratives. The Columbian plate numbers are very difficult to find but that is not the case with BEP plate numbers 1-999.

This series may be the most interesting of any group of 1000 plate numbers. Many firsts occur here including the first plate number, the start of the First Bureau Series (the issue of 1894), the first stamps printed by the BEP for use in a US territory (Cuba), the first postage stamps overprinted for use in the Philippines, Puerto Rico, Guam, and for use by the Internal Revenue Service.

The 1st Bureau Series contained the same designs as the regular issue of 1890. The BEP added triangles in the top corners of the designs to distinguish their product from that of the American Bank Note Company. The 1890 30c and 90c stamps became 50c and \$1 stamps. The \$2 and \$5 values were the first two Bureau designs. 742 of the 999 plates were assigned to the 1st Bureau Series. Of these 742 plates, 725 were sent to press, 725 are available to collectors and all 725 have been reported to exist by collectors. However, finding all 725 of these plate numbers is a real challenge. Only one copy has been reported of the \$5 Marshall plate 288. Some of the 1c Franklin plates in the 900 series are rare. The 1st Bureau plates will be examined in more detail in a subsequent chapter.

The Trans-Mississippi commemorative series is contained in the first 999 plate numbers. 149 plate numbers were used to print these beautiful stamps. The original intent was to have bicolored stamps. In 1998, the USPS issued a commemorative sheet depicting the original bicolored designs. Printing the 1898 stamps in two colors would really have made the plate number chase interesting with perhaps twice as many plates to find. It is possible to find all 149 of the plates of the 1898 issue. There are two main obstacles to accomplishing this and one is the price of the high value stamps which put them out of reach of some collectors. None of the values above 2c is too difficult to find if the money is available. The 1c stamp required 14 plates and none of these plates is really scarce. The 2c stamp was printed from 121 plates and finding all of these is both the real challenge and the 2nd major obstacle in completing the plate numbers of this series of stamps. Plates 667, 671, 675, 685, and 691 are flagged as scarce by the Durland catalog. Plate 671 is probably the toughest. But copies can be found and the collector who can locate all 149 plates in this classic series should be really proud of his or her accomplishment.

Eight plates were used to print the 10c special delivery stamp and the last 4 of these (880, 881, 882, and 883) are not easy to locate. These last four plates were also overprinted for use in Guam and the Philippines. Plate 492 was overprinted for use in Cuba.

A new series of postage due stamps was launched in 1894 and all seven values were printed in the first 999 plate numbers. 17 postage due plates were used. Most of these are easy to locate except for plate 34, the first 2c postage due plate. Each denomination was overprinted for use in the Philippines and some of the lower values were also overprinted for use in Cuba and Puerto Rico.

Newspaper stamps were printed by the BEP using plates from the American Bank Note Company (ABNC). Plate numbers were assigned to the ABNC plates but were not entered on these plates. The BEP also made some newspaper plates and BEP plate numbers do appear on 12 values ranging from 1c to \$100. 17 plates are available to collectors. The 2c plate number 265 and 10c plate number 269 are rare and are the premium items of this set.

The BEP printed stamps for use in Cuba in 1899. 18 plates were used for 6 values and these plates are really tough to find since they were used outside the US.

Collectors of plate strips which also show the BEP imprint will find the first nine imprint types in the first 999 plate numbers. The style of the digits of the plate numbers also changed in the first 999 plates. The initial plate numbers were composed of ornate digits similar to rubber stamp digits. Plate number 255 saw the digits change to a more formal style such as those produced by a typewriter. But plate number 256 returned to the ornate style and the permanent change to the formal style did not occur until plate number 328.

Some of the plates in this set of 999 are available in multiple varieties. Unwatermarked paper was supplanted by the double line watermarked paper in 1895 and there are plate numbers available with both paper varieties. Color changes were made on some of the 1st Bureau series stamps and again some plate numbers are available with both colors. Especially striking is the 1c Franklin with the same plate number in both the original blue and the replacement green colors.

The first 999 plate numbers were assigned over a period of 6 years. 934 of the first 999 plate numbers are available to collectors. A collector should be able to locate a large percentage of these without undue difficulty and this would be a fascinating plate number collection. The first 999 plate numbers have fascinated many collectors over the years and this group is highly recommended to the plate number enthusiast looking for new challenges.

Plate numbers expand to four digits with the start of the 1000 section of plates. Collectors also encounter the first unreported plate number in the 1000 section. The dramatic details follow in the next chapter.

## Chapter 2-0000

		0000 Series Totals					
Series	Subject	Plate Type	Assigned	To Press	Available	Unreported	I Have
	(totals)		999	946	934	0	
1st Bureau Series							
1894	1c Franklin	400F	203	201	201	0	
1894	2c Washington Type I	400F	41	39	39	0	
1894	2c Washington Type II	400F	5	5	5	0	
1894	2c Washington Type II, III	400F	1	1	1	0	
1894	2c Washington Type III	400F	210	206	206	0	
1894	2c Washington Type IV	400F	141	140	140	0	
1894	2c Washington book	360F	4	4	4	0	
1894	3c Jackson	200F	8	8	8	0	
1894	3c Jackson	400F	4	4	4	0	
1894	4c Lincoln	200F	24	24	24	0	
1894	4c Lincoln	400F	4	4	4	0	
1894	5c Grant	200F	44	40	40	0	
1894	5c Grant	400F	4	4	4	0	
1894	6c Garfield	200F	11	11	11	0	
1894	8c Sherman	200F	7	7	7	0	
1894	10c Webster Type I	400F	13	12	12	0	
1894	10c Webster Type I, II	400F	1	1	1	0	
1894	10c Webster Type II	400F	7	7	7	0	
1894	15c Clay	200F	2	2	2	0	
1894	50c Jefferson	200F	2	1	1	0	
1894	\$1 Perry	200F	2	1	1	0	
1894	\$2 Madison	200F	2	1	1	0	
1894	\$5 Marshall	200F	2	2	2	0	
Commemorative							
1898	1c Trans-Mississippi bi-color	100F	5	0	0		
1898	2c Trans-Mississippi bi-color	100F	2	0	0		
1898	4c Trans-Mississippi bi-color	100F	2	0	0		
1898	5c Trans-Mississippi bi-color	100F	2	0	0		
1898	8c Trans-Mississippi bi-color	100F	1	0	0		
1898	10c Trans-Mississippi bi-color	100F	1	0	0		
1898	1c Trans-Mississippi	100F	14	14	14	0	
1898	2c Trans-Mississippi	100F	126	121	121	0	
1898	4c Trans-Mississippi	100F	3	3	3	0	
1898	5c Trans-Mississippi	100F	4	3	3	0	
1898	8c Trans-Mississippi	100F	3	2	2	0	
1898	10c Trans-Mississippi	100F	3	3	3	0	
1898	50c Trans-Mississippi	100F	1	1	1	0	
1898	\$1 Trans-Mississippi	100F	1	1	1	0	
1898	\$2 Trans-Mississippi	100F	1	1	1	0	
Special Purpose Issues							
1894	10c Special Delivery	100F	9	8	8	0	
1894	1c Postage Due	400F	4	0	0		

## Chapter 2-0000

1894	1c Postage Due	200F	4	4	4	0	
1894	2c Postage Due	200F	5	5	5	0	
1894	3c Postage Due	200F	2	2	2	0	
1894	5c Postage Due	200F	2	2	2	0	
1894	10c Postage Due	200F	2	2	2	0	
1894	30c Postage Due	200F	2	1	1	0	
1894	50c Postage Due	200F	2	1	1	0	
1894	1c Newspaper	100F	2	2	2	0	
1894	2c Newspaper	100F	2	2	2	0	
1894	5c Newspaper	100F	2	2	2	0	
1894	10c Newspaper	100F	2	2	2	0	
1894	25c Newspaper	100F	2	1	1	0	
1894	50c Newspaper	100F	2	2	2	0	
1894	\$2 Newspaper	100F	2	1	1	0	
1894	\$5 Newspaper	100F	2	1	1	0	
1894	\$10 Newspaper	100F	2	1	1	0	
1894	\$20 Newspaper	100F	2	1	1	0	
1894	\$50 Newspaper	100F	2	1	1	0	
1894	\$100 Newspaper	100F	2	1	1	0	
	1c Newspaper	100F	2	1	0		
	2c Newspaper	100F	1	1	0		
	4c Newspaper	100F	1	1	0		
	6c Newspaper	100F	1	1	0		
	10c Newspaper	100F	1	1	0		
	12c Newspaper	100F	1	1	0		
	24c Newspaper	100F	1	1	0		
	36c Newspaper	100F	1	1	0		
	60c Newspaper	100F	1	1	0		
	72c Newspaper	100F	1	0	0		
	96c Newspaper	100F	1	1	0		
	\$3 Newspaper	100F	1	1	0		
	\$6 Newspaper	100F	1	1	0		
1899	1c Cuba	200F	4	4	4	0	
1899	2c Cuba	200F	4	4	4	0	
1899	3c Cuba	200F	4	4	4	0	
1899	5c Cuba	200F	4	4	4	0	
1899	10c Cuba	200F	1	1	1	0	
1899	10c Cuba Special Delivery	100F	1	1	1	0	









14  
1c Franklin  
not finished







22



Bureau, Engraving & Printing



23



24



25



Bureau, Engraving & Printing

26



27



28



29



30



31



Bureau, Engraving & Printing

32



33



34



Bureau, Engraving & Printing

35

36  
1c Newspaper  
American Bank Note  
plate number 482



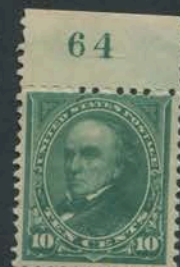
37	38	39	40	41	42	43
1c Newspaper	2c Newspaper	4c Newspaper	6c Newspaper	10c Newspaper	12c Newspaper	36c Newspaper
Continental Bank Note	Continental Bank Note	Continental Bank Note	Continental Bank Note	Continental Bank Note	Continental Bank Note	Continental Bank Note
no plate # on Sheet	no plate # on Sheet	no plate # on Sheet	no plate # on Sheet	no plate # on Sheet	no plate # on Sheet	no plate # on Sheet







61  
10c Webster  
not finished



65  
72c Newspaper  
Continental Bank Note  
no plate # on Sheet

66-69  
1c Postage Due  
not used





70



Bureau, Engraving & Printing

71



71



72



73



74



75



75



76



77



78



Bureau, Engraving & Printing

79



80



Bureau, Engraving & Printing

82

81  
24c Newspaper  
Continental Bank Note  
no plate # on Sheet

83  
60c Newspaper  
Continental Bank Note  
no plate # on Sheet





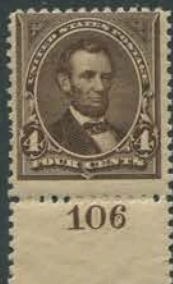
86-87  
2c Washington  
not finished



89  
rare - cost  
\$1,000







108  
\$3 Newspaper  
Continental Bank Note  
no plate # on Sheet







118  
\$6 Newspaper  
Continental Bank Note  
no plate # on Sheet







127  
96c Newspaper  
Continental Bank Note  
no plate # on Sheet



































200  
2c Washington  
not used



208  
2c Washington  
not used





















258  
25c Newspaper  
not finished



260  
30c Postage Due  
not finished

261  
50c Postage Due  
not finished



263  
2c Washington  
not used





269  
10c Newspaper  
rare



270  
\$2 Newspaper  
not finished

271  
\$10 Newspaper  
not finished

272  
\$20 Newspaper  
not finished

273  
\$5 Newspaper  
not finished







284-287  
\$100, \$50, 50c, \$1  
Newspaper  
not used

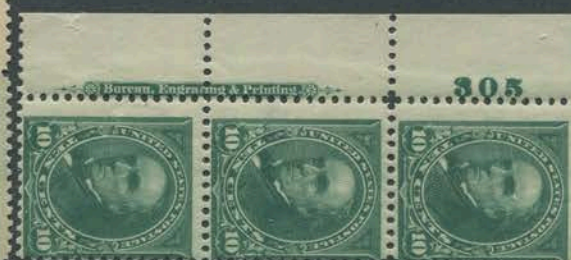
288  
\$5 Marshall  
unique



289  
\$2 Madison  
not used















309  
1c Franklin  
not used















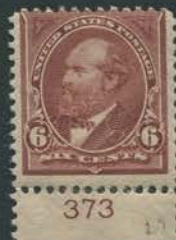












375  
5c Grant  
not used



377-378  
5c Grant  
not used





380  
5c Grant  
not used































































504  
2c Washington  
not used









511  
I.R. Invert!















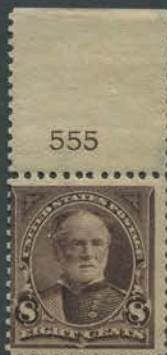
535

































576-588  
Trans-Mississippi  
bi-color issue  
test, not used

589  
2c Trans-Mississippi  
not used





















624

625  
2c Trans-Mississippi  
(missing)

626  
2c Trans-Mississippi  
(missing)



627



628



629



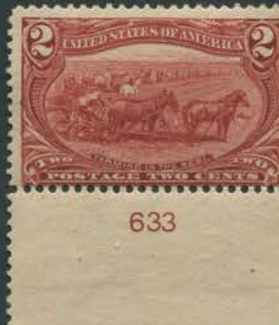
630



631



632



633

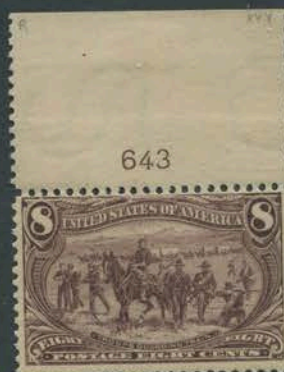


634

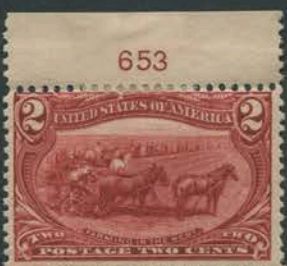




637  
5c Trans-Mississippi  
not used









662



663



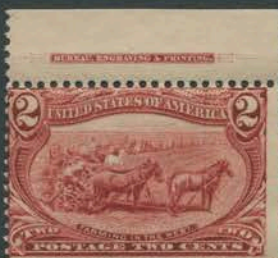
664



665



666



667



668

669



670

671

2c Trans-Mississippi  
rarest T-M plate



671

672



673



674





675



676



677



678



679



680



681

682  
10c Special Delivery  
not used



683



684



685



686



687





688



689



690



691

*Seal*



692



693



694



695



696



697



698



699



700  
2c Trans-Mississippi  
(missing)

701  
2c Trans-Mississippi  
(missing)

702  
2c Trans-Mississippi  
(missing)

703  
2c Trans-Mississippi  
(missing)

704  
2c Trans-Mississippi  
(missing)

705  
2c Trans-Mississippi  
(missing)

706  
2c Trans-Mississippi  
(missing)

707  
2c Trans-Mississippi  
(missing)

708  
2c Trans-Mississippi  
(missing)





713  
2c Trans-Mississippi  
(missing)

714  
2c Trans-Mississippi  
(missing)

715  
2c Trans-Mississippi  
(missing)

716  
2c Trans-Mississippi  
(missing)







723  
2c Trans-Mississippi  
not used



730-731  
2c Trans-Mississippi  
not used







736  
2c Trans-Mississippi  
not used



















757  
8c Trans-Mississippi  
not used















































809



810



811



812



813



814



815



816



817



818



819



820



821



822



823



824



825



826



827









Bureau, Engraving & Printing



838



Bureau, Engraving & Printing

839



Bureau, Engraving & Printing

840



Bureau, Engraving & Printing

841































868  
2c Washington  
not finished







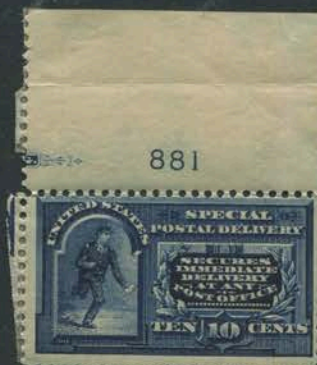












































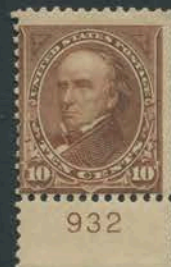




































965  
1c Washington  
very rare



968  
1c Washington  
very rare



970  
1c Washington  
rare







981  
5c Grant  
missing from collection





982



983



984



985



986



987

988-991  
2c Washington booklet  
very scarce



988



989



990



991



