

Chapter 3

Plate Numbers 1000-1999

Plate number 1000 was assigned in April, 1900 to the 1c Franklin stamp of the issue of 1894 and plate number 1999 was assigned to the 2c Washington shield stamp of the 1902 series. Fewer collectors seemed to be collecting these plates, perhaps because there seemed to be no end to the numbers. Except for the Pan-American commemorative stamps of 1901, there seem to be far fewer copies of these plate numbers available to collectors.

The regular issue of 1894 (the First Bureau Series), ended with plate number 1508, the last plate number available to collectors. The issue of 1902 (the Second Bureau Series) started with plate 1473 which was assigned to the 13c Harrison stamp.

All of the 1st Bureau plates are reported but the sixteen 2c Washington booklet plates pose the greatest challenge. Six of the sixteen 2c Washington booklet plates had only one report in the BIA plate number survey and none of the sixteen had more than three. Plate number copies of the 2c Washington booklets are the real rarities of the 1st Bureau Series. Apparently few collectors of that era realized that plate numbers were available on the booklet pane tabs. The 2c Washington sheet plates seem easier to locate than the 1c Franklin plates. The values above 2c are more difficult to locate than they were in the first 999 plate numbers.

Approximately half the numbers in the 1000 series are devoted to the start of the 2nd Bureau Series, the series of 1902. Many collectors today consider the 2nd Bureau Series to be the most beautiful and artistically successful of all the regular issues. Apparently collectors of that time were not as interested, especially in the plate numbers. Many fewer of these plates were saved and, as a result, the 2nd Bureau Series is by far the most difficult plate number series to collect. In addition, stamp booklets became popular with the public and many plates were needed to print these booklets. But most plate number collectors were either ignorant or not interested in the booklets and the result is today that these booklet plate numbers are classic rarities. 32 booklet plates were used on both the 2c Washington flags and 2c Washington shield stamps and 3 of these plates have never been reported. Only 2 booklet plates had more than 2 reports in the BIA survey, and most had only 1 report.

All values of the 2nd Bureau series were printed in the 1000 series. The \$2 and \$5 plates are very scarce. These stamps themselves are very expensive and plate number copies are very tough to locate. The 3c through the 15c values are the easiest plates to locate. The 1c and 2c stamps have some really rough plate numbers. The 2c Washington flags stamp was printed from 145 plates, all in the 1000 series. A collector who desires a major challenge might consider this stamp. Completing this issue would be a major accomplishment. The 2c Washington shield became the basic stamp in the series in 1903 and this stamp's first plate number is 1805. Plate number copies of the

2nd Bureau series stamps exist overprinted for use in the Canal Zone and the Philippines.

The 1000 series of plate numbers contains one commemorative issue, the 1901 Pan-American stamps. These bi-colored stamps gave collectors their first opportunity to collect plate number combinations. The Pan-American plates were 200 subject flat plates and the printed sheets were cut into 100 subject top and bottom panes. The frame plate number appeared twice on the top and twice on the bottom panes. But the center plate number appeared only once, on the lower left of the bottom pane. This is why the frame plates seem much more common than the center plates. The plate numbers of the stamps above the 2c value are fairly easy to locate. The 2c value used 36 center plates and some of these are quite difficult. The 1c center plates are much tougher than the 2c. There are six 1c center plates with three or fewer reports in the plate number survey. The first 2c center plate (1079) is unusual in that the plate number digits are of a fancy style unlike any other plate numbers. The commemorative plates are usually heavily collected so it is a real event when a new number is found. Amazingly, this happened with one of the center 1c plates. Plate number 1236 was not known to exist but a copy was found paired with frame plate 1116 just a few years ago. New discoveries can still be made in the plate number series so the collector should never stop looking.

Twenty-one more postage due plates went to press in the 1000 section. Most of these are scarce and the 2c plates 1783, 1784, 1785, and 1786 are rare.

Two more plates went to press for stamps used in Cuba. One of these printed the 2 centavo booklet. The booklet pane is rare, but a pane with the plate number (1323) is unknown and is the first unreported plate number. All four unreported plate numbers in the 1000 series are booklet plate numbers. The other Cuba plate number (1432) was a 10c special delivery stamp which was printed to correct a spelling error on the original special delivery stamp printed from plate number 908. The spelling error was “Immediata” and this was corrected to “Inmediata” on the stamps printed from plate number 1432. It is interesting to note that the corrected special delivery stamp was issued in 1902 after the formation of the Republic of Cuba.

The 1000 series of plate numbers was assigned from 1900 until January of 1904. Plates went to press at a 50% greater rate than in the first 999 plates. Fewer collectors seemed to save these plates and thus there are fewer for today’s enthusiast. 955 of the 1000 numbers are available with 951 numbers reported. Few collectors in the past have been able to put together a large holding of these plates. I believe assembling 500 of these plate numbers would be an uncommon achievement. The challenge is there for the ambitious collector and there is not a lot of competition for these plate numbers.

The 1000 series marked the end of the 1st Bureau series. The next chapter will take a look at this fascinating series of plates.

Chapter 3-1000

		1000 Series Totals					
Series	Subject	Plate Type	Assigned	To Press	Available	Unreported	I Have
	(totals)		1000	955	955	4	
1st Bureau Series							
1894	1c Franklin	400F	152	148	148	0	
1894	2c Washington type IV	400F	172	169	169	0	
1894	2c Washington book	180F	12	12	12	0	
1894	2c Washington book	360F	8	4	4	0	
1894	3c Jackson	200F	4	4	4	0	
1894	4c Lincoln	200F	8	8	8	0	
1894	5c Grant	200F	16	12	12	0	
1894	6c Garfield	200F	4	0	0		
1894	8c Sherman	200F	4	4	4	0	
1894	10c Webster Type II	200F	4	4	4	0	
2nd Bureau Series							
1902	1c Franklin	400F	128	128	128	0	
1902	2c Washington	400F	146	145	145	0	
1902	2c Washington book	180F	24	20	20	0	
1903	2c Washington Die I	400F	127	124	124	0	
1903	2c Washington Die I book	180F	12	12	12	3	
1902	3c Jackson	400F	4	4	4	0	
1902	4c Grant	400F	8	8	8	0	
1902	5c Lincoln	400F	9	9	9	0	
1902	6c Garfield	400F	4	4	4	0	
1902	8c M. Washington	400F	4	4	4	0	
1902	10c Webster	400F	4	4	4	0	
1902	13c Harrison	400F	4	4	4	0	
1902	15c Clay	200F	1	1	1	0	
1902	50c Jefferson	200F	1	1	1	0	
1902	\$1 Farragut	200F	1	1	1	0	
1902	\$2 Madison	200F	1	1	1	0	
1902	\$5 Marshall	200F	1	1	1	0	
Commemorative							
1898	4c Trans-Mississippi bi-color	100F	2	0	0		
1901	1c Pan-American frame	200F	12	8	8	0	
1901	1c Pan-American center	200F	25	20	20	0	
1901	2c Pan-American frame	200F	15	12	12	0	
1901	2c Pan-American center	200F	40	36	36	0	
1901	4c Pan-American frame	200F	1	1	1	0	
1901	4c Pan-American center	200F	1	1	1	0	
1901	5c Pan-American frame	200F	1	1	1	0	
1901	5c Pan-American center	200F	1	1	1	0	
1901	8c Pan-American frame	200F	1	1	1	0	
1901	8c Pan-American center	200F	1	1	1	0	
1901	10c Pan-American frame	200F	1	1	1	0	
1901	10c Pan-American center	200F	1	1	1	0	

Chapter 3-1000

Special Purpose Issues							
1894	10c Special Delivery	100F	4	4	4	0	
1902	10c Special Delivery	100F	8	8	8	0	
1894	1c Postage Due	200F	5	5	5	0	
1894	2c Postage Due	200F	9	9	9	0	
1894	3c Postage Due	200F	2	2	2	0	
1894	5c Postage Due	200F	2	2	2	0	
1894	10c Postage Due	200F	3	3	3	0	
1899	2c Cuba book	180F	1	1	1	1	
1899	10c Cuba Special Delivery	100F	1	1	1	0	



1008-1011

2c Washington booklet

These four examples are the only known copies. Each is unique.



INVERTED Horiz WMK

Country _____ Cat.No. 279Bj
Unused ☐ Used ☐ Hinged ☐ LH ☒ NH ☐
Average ☐ Fine ☐ VF ☐ EF ☐
Complete Set ☐ Partial Set ☐ Single ☐ Block ☐

Notes UNIQUE - ONLY ONE KNOWN

Cat. Value _____ Selling Price _____



Horiz. WMK

Country _____ Cat.No. 279Bj
Unused ☐ Used ☐ Hinged ☐ LH ☒ NH ☐
Average ☐ Fine ☐ VF ☐ EF ☐
Complete Set ☐ Partial Set ☐ Single ☐ Block ☐

Notes UNIQUE - ONLY ONE KNOWN

Cat. Value _____ Selling Price _____



HORIZ Wmk, INVERTED + REVERSED

Country _____ Cat. No. 279Bj
Unused ☐ Used ☐ Hinged ☐ LH ☒ NH ☐
Average ☐ Fine ☐ VF ☐ EF ☐
Complete Set ☐ Partial Set ☐ Single ☐ Block ☐
Notes UNIQUE - ONLY ONE KNOWN
Cat. Value _____ Selling Price _____



INVERTED HORIZ Wmk

Country _____ Cat. No. 279Bj
Unused ☐ Used ☐ Hinged ☐ LH ☒ NH ☐
Average ☐ Fine ☐ VF ☐ EF ☐
Complete Set ☐ Partial Set ☐ Single ☐ Block ☐
Notes UNIQUE - ONLY ONE KNOWN
Cat. Value _____ Selling Price _____





1036-1037
4c Trans-Mississippi
not finished









1093
2c Pam-Am center
(missing)







1120
1c Pan-Am frame
(missing)

1121
1c Pam-Am center
(missing)

















1178
2c Pam-Am center
(missing)





1183



1184



1185



1186



1187



1188



1189



1190



1191



1192



1098

1193



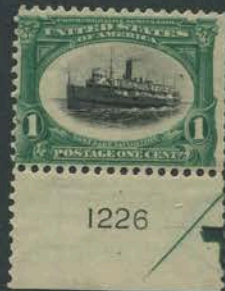


1203
2c Pan-Am frame
not used













1236
1c Pan-Am center
unique, only known copy



1237
1c Pan-Am frame
not used





1246
1c Pan-Am frame
not used

1247
2c Pan-Am frame
not used



1249
1c Pan-Am frame
not used

1250
2c Pan-Am frame
not used



1253-1256
1c Pan-Am center
not finished



1261-1264
2c Pan-Am center
not used



1265



1266



1267



1268



1269



1270

1271-1274
2c Washington booklet
not used



1275



1276



1277



1278

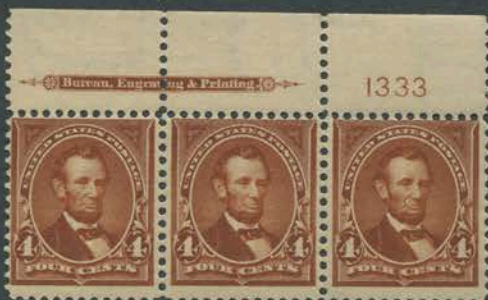






1323
2c Cuba booklet
rare, no plate number reported















1388-1391
5c Grant
not used





1410
1c Franklin
(missing)





1445-1448
6c Garfield
not finished



1452



1454



1458



1465



1479
4c Sherman
(missing)





1481



1482



1483



1484



1485



1486



1487

1488
1c Franklin
rare, not in collection



1489



1490



1491



1492



1494-1496
2c Washington
not finished





1509-1512
1c Franklin
not finished







1558
2c Washington
not used









1588



1589



1590



1591



1592



1593



1594

1595
2c Washington booklet
rare, not in collection



1596



1597



1598



1599



1600



1601



1602



1602







1631



1632



1633



1634



1635



1636



1637



1638



1639



1640



1641



1642



1643



1644























1788-1791
2c Washington booklet
not finished







1821



1822



1823



1824



1825



1826



1827



1828



1829



1830



1831



1832



1833



1834



1835



1836



1837



1838



1839



1840



1841



1842



1843



1844



1846-1848
2c Washington booklet
unreported



1851
2c Washington
rare, not in collection



1859
2c Washington
not used

1860
2c Washington
rare, not in collection



1869
1c Franklin
rare, not in collection



1871
1c Franklin
rare, not in collection



1875
1c Franklin
rare, not in collection



1883
1c Franklin
rare, not in collection





1897
1c Franklin
rare, not in collection



1899
1c Franklin
rare, not in collection





1912
2c Washington
not finished





1939
2c Washington
not finished







