

Chapter 5

Plate Numbers 2000-2999

The 2000 series of plate numbers has the distinction of having more plates sent to press than any other group of 1000 plate numbers. 992 plates were sent to press and all but 2 are reported in the BIA's plate number survey. Plate number 2000 was assigned to the 2c Washington shield sheet stamp in January, 1904 and plate number 2999 to the 1c Franklin sheet stamp in March of 1906. I do not know if more stamps were being used by the public, or if the BEP was getting fewer impressions per plate (the more complex designs may have caused the plates to wear out faster), but the rate at which plates were used was increasing. The first 999 plates covered 6 years, 4 years for the 1000 section, and now just over 2 years for the 2000 section. The regular issue of 1902, the second Bureau series, had most of the plates (920) assigned and the remaining 80 plates were assigned to the Louisiana Purchase commemorative series.

The second Bureau series seems to me to be the black hole of the plate number collecting universe. Most collectors will probably agree that the 1902 issue is the toughest of any of the regular issues. Collector interest seemed to wane around 1900 and not many of these plates were saved. I am amazed that collectors of that era did such a good job at finding most of the plate numbers. Even the most common of the 1c and 2c second Bureau issue plates would rank as scarce in any other series.

The 1c Franklin had 218 plates sent to press and, as with the 1894 1c, I find these plates to be much more troublesome than the 2c plates. 584 2c Washington plates went to press. I think any collector who can manage 50% of either of these issues should be proud of his accomplishment. The biggest problem in the series is the group of 2c Washington booklet plates. As with the 1894 booklets, these are all rare. 81 of these plates were sent to press and 2 are still unreported. Most of these plates had only 1 or 2 reports in the plate number survey. If these items were as popular as plate number coils are today, the prices would reach into 5 digits! 33 plates were used to print higher values from the 3c to the 15c. In this group, the toughest numbers are 2516-2519 on the 3c Jackson.

Some interesting varieties can be found on some of the 2nd Bureau series stamps. The 5c Lincoln plates 2951-4 are known imperforate and are scarce and expensive. A few of the 1c Franklin and 2c Washington shield plates are known overprinted for use in the Canal Zone and the Philippines. Some of the 3c Jackson, 5c Lincoln, and 15c Clay plates are overprinted for use in the Philippines. Plate number copies of these overprints are seldom seen and are a nice addition to a collection of these difficult plates.

Seventy-six plates were used to print the 1904 Louisiana Purchase stamps. It is not easy but this issue can be completed. The 2c stamp with 40 plates used is the most difficult. The 3c, 5c, and 10c stamps each required 4 plates. I remember in the mid-

1960s walking into a drugstore in a small town on the east coast. At the counter, there were some stamps in a display case and one of the items was a plate pair of the 5c Louisiana plate 2099 which I did not have in my collection. The price was very reasonable and the encounter was very unexpected. You never know when or where the next new plate number will appear which adds to the fun of this hobby.

I do not mean to discourage collectors by making comments about the difficulty in collecting certain areas of plate numbers. Many collectors are attracted to a strong challenge. As a young collector, I remember being intimidated when I read about how tough some of these early plates were. When I got the courage to test the waters, I wondered why I had waited so long. Every new find adds to the fun and excitement of the plate number chase. If you collect this series, you will be going where few dare to tread. And speaking of daring to tread, we will next look at the 3000 series which is even tougher than the 2000 series!

Chapter 5-2000

		2000 Series Totals					
Series	Subject	Plate Type	Assigned	To Press	Available	Unreported	I Have
	(totals)		1000	992	992	2	
2nd Bureau Series							
1902	1c Franklin	400F	218	218	218	0	
1903	2c Washington Die I	400F	587	584	584	0	
1903	2c Washington Die I book	180F	81	81	81	2	
1902	3c Jackson	400F	8	8	8	0	
1902	4c Grant	400F	4	4	4	0	
1902	5c Lincoln	400F	9	8	8	0	
1902	8c M. Washington	400F	4	4	4	0	
1902	10c Webster	400F	8	8	8	0	
1902	15c Clay	200F	1	1	1	0	
Commemorative							
1904	1c Louisiana Purchase	100F	24	24	24	0	
1904	2c Louisiana Purchase	100F	44	40	40	0	
1904	3c Louisiana Purchase	100F	4	4	4	0	
1904	5c Louisiana Purchase	100F	4	4	4	0	
1904	10c Louisiana Purchase	100F	4	4	4	0	







2050
2 Washington
not finished

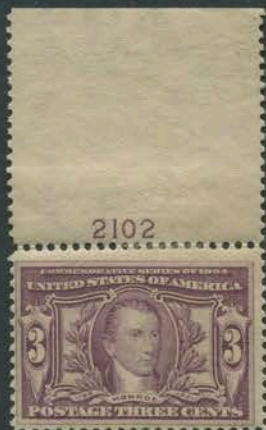


2053
1c Franklin
rare, not in collection

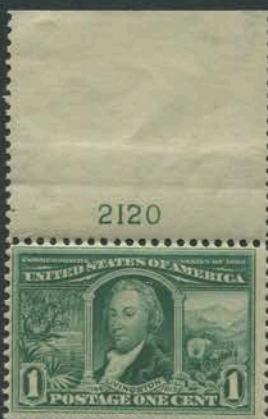


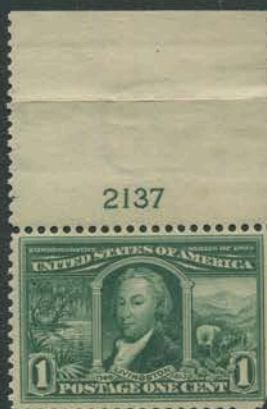
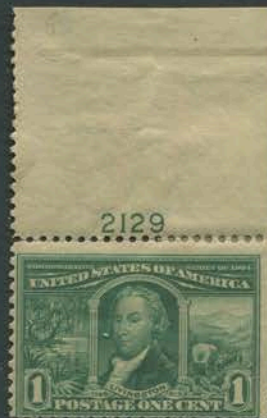




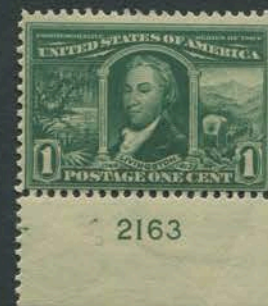
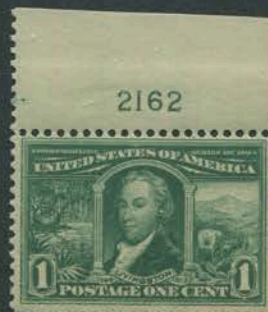
















2190
2 Washington
not finished



2197-2200
2c Louisiana
not used







2228
5c Lincoln
not finished



2233
2c Washington booklet
rare, not in collection

2234
2c Washington booklet
unreported

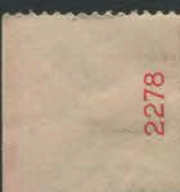
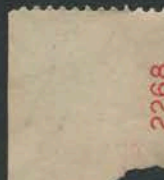
2235
2c Washington booklet
rare, not in collection

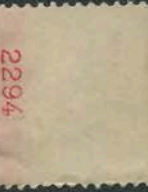
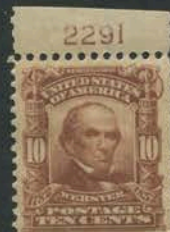
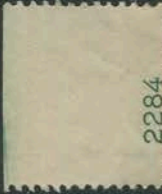




Howson, Eugene, et al. Printing

2260











2342



2344



2347



2348



2349



2350



2351



2352



2353



2354



2355



2356



2357



2358



2359



2360



2361

















2505
2c Washington booklet
rare, not in collection















2605
2c Washington booklet
unreported

2606
2c Washington booklet
rare, not in collection

2607
2c Washington booklet
rare, not in collection

















2750
1c Franklin
rare, not in collection





2766





2780
2 Washington
not finished





2787



2788



2789



2790



2791



2793



2794



2795



2796



2797



2798



2799



2800



2801













